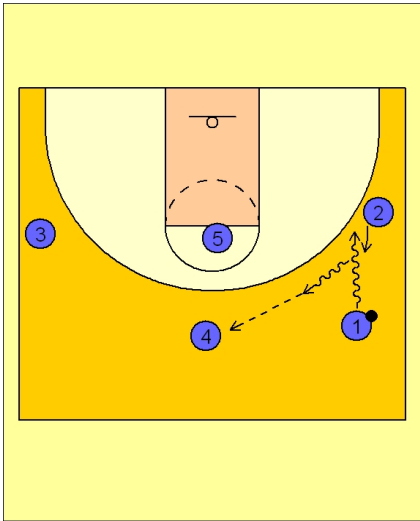




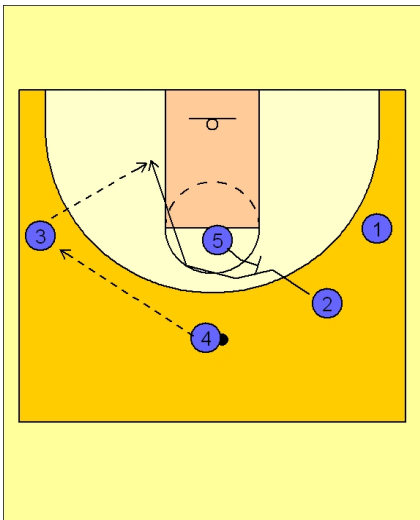
Set play (13)



Louisville Set Play vs. Man Defense

#1 dribbles at #2 on the right wing and executes a dribble hand-off.

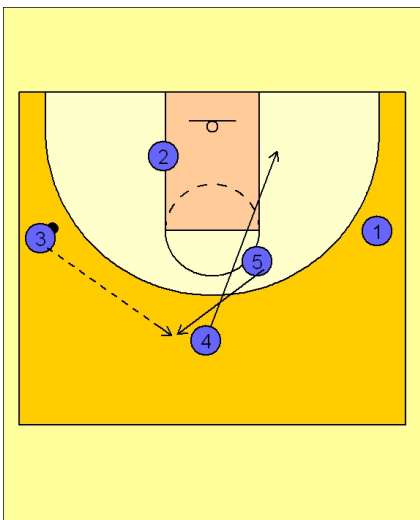
#2 takes the ball and attacks the top of the key area and makes the pass to #4 on top.



Louisville Set Play vs. Man Defense

#4 reverses the ball to #3 on the left wing while #2 cuts off a diagonal back screen from #5.

#3 looks inside to #2 cutting to the low block.



Louisville Set Play vs. Man Defense

After #4 passes to #3 he cuts down to the opposite low block while #5 breaks up on top to receive the pass from #3.



Louisville Set Play vs. Man Defense

#5 then reverses the ball to #1 on the right wing.

#4 sets a screen on the right low block for #2 breaking to the corner for the potential open jumper.

#5 screens away for #3 on the opposite wing.

Louisville will play motion from here on out.

