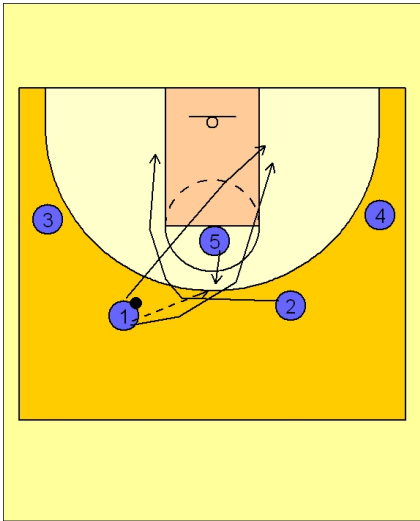




Set play (14)



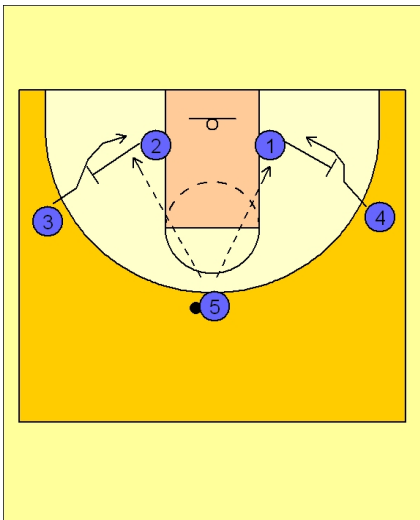
Louisville Set Play vs. Man Defense

2 - 3 high set to begin.

#1 enters to #5 stepping out of the high post area.

#1 cuts to the opposite low block over or under #5.

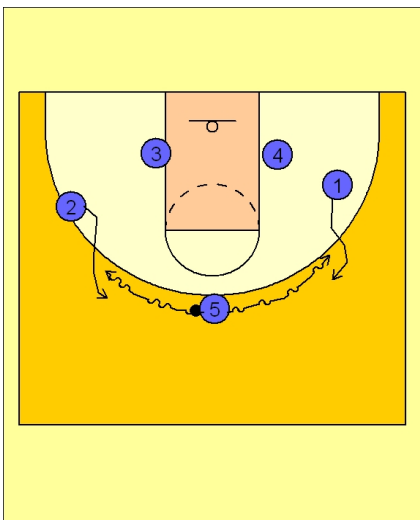
#2 cuts behind #1 to the opposite low block.



Louisville Set Play vs. Man Defense

#1 and #2 then step out and back screen for #4 and #3 on the wings.

#5 looks inside first.



Louisville Set Play vs. Man Defense

If nothing is available inside, #5 will execute a dribble hand off to either wing player.

The wing players will take the hand off and look to get in the lane on the dribble.

Louisville will play motion offense the rest of the possession.