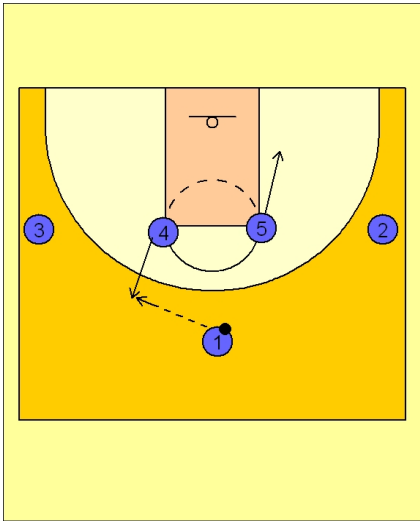




### Set play (15)

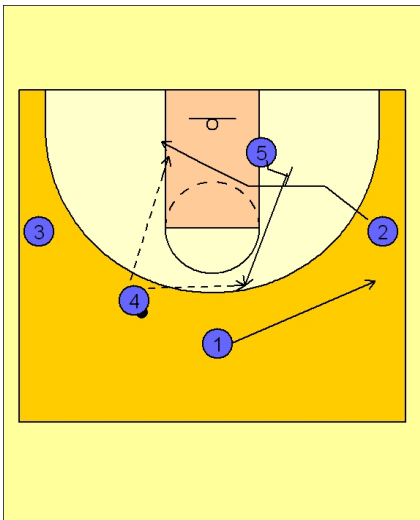


#### Louisville Set Play

1 - 4 high set to begin.

#4 steps out and receives the entry pass from #1.

#5 moves down to the right low block.

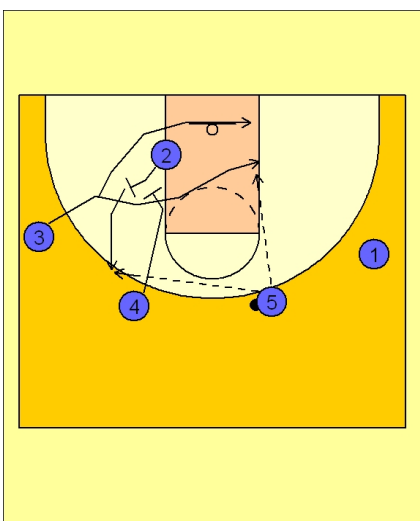


#### Louisville Set Play

As #1 passes to #4, he cuts to the right wing area.

#5 steps out and sets a back screen for #2 on the right wing.

#4 looks inside to #2 cutting across the lane. If #2 is not open, #5 breaks up to the top after #2 cuts off of his screen.



#### Louisville Set Play

Once #5 has the ball, #2 will now step out and back screen #3.

#3 cuts over or under the screen from #2 while #4 sets a down screen for the screener #2.

#2 breaks up on top.

#5 will look to hit #3 first and then pass to #2 on top.



**Louisville Set Play**

Once #2 has the ball, #4 is isolated on the left low block. #2 will look to feed the low post.

Louisville will go to their motion offense from here.

