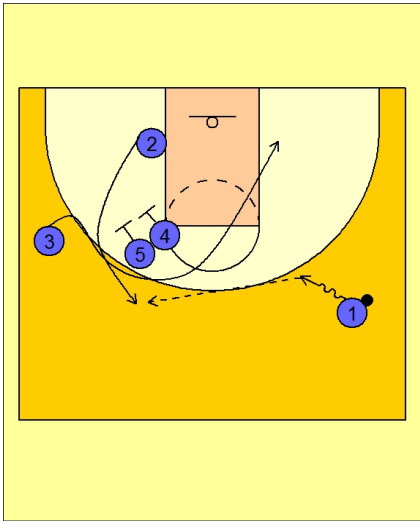




Set play (19)

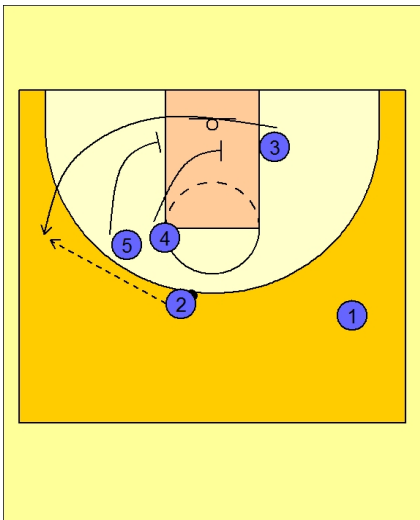


Louisville Set Play

#3 rubs off of double screens from #5 and #4.

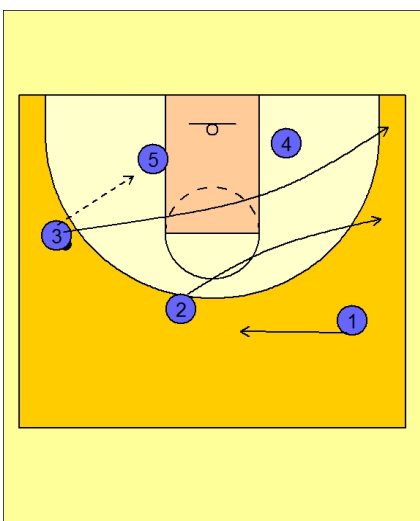
#2 comes off the double screen from #4 and #5.

#1 passes to #2.



Louisville Set Play

#4 and #5 set a staggered double screen for #3 coming off to score.



Louisville Set Play

If #3 doesn't have a shot, #5 is sealing hard.

#3 feeds the post and dives opposite.