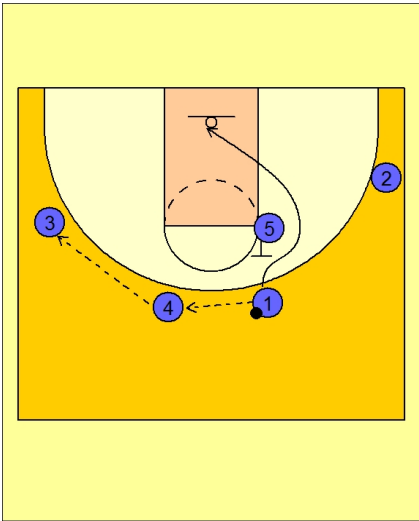




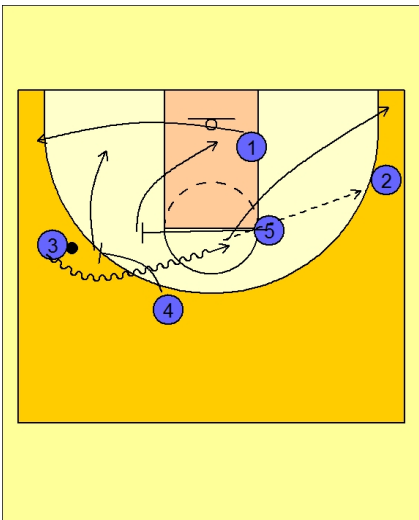
Set play (20)



Louisville Set Play

#1 passes to #4 who swings to #3.

#5 backscreens for #1.

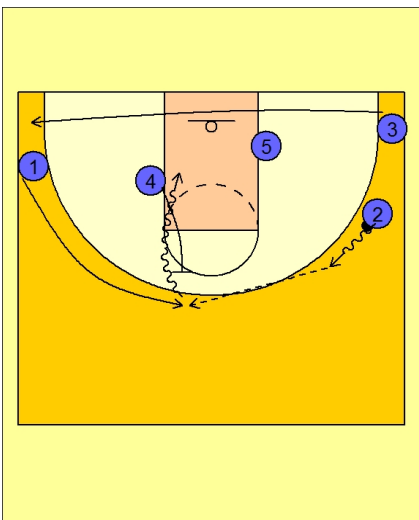


Louisville Set Play

#1 sprints to strong corner.

#4 and #5 set a double staggered pick and roll for #3.

If #3 cannot get in the lane to score, will kick out to #2.



Louisville Set Play

#1 sprints to the key and #3 sprints through to the corner.

On the catch, #4 sets a flat pick and pop for #1.