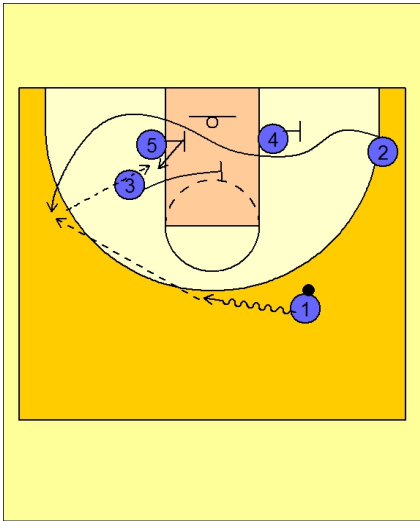




Set play (22)



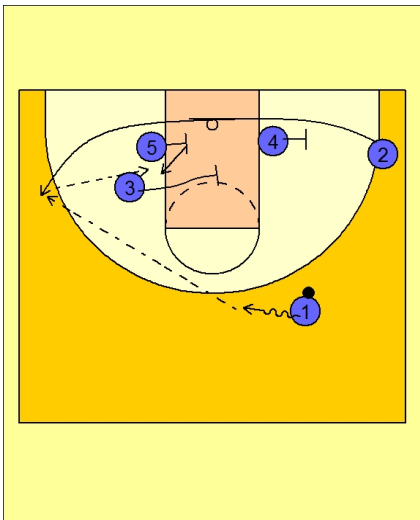
Louisville Set Play

#4 and #5 set baseline screens for #2.

#3 stops in the middle of the lane to try and get a piece of #2's defender.

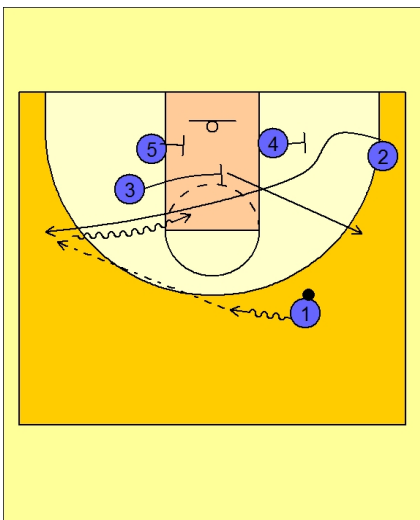
#1 passes to #2.

On the catch #5 button hooks and seals in the post.



Louisville Set Play

#2 can go under all the way.



Louisville Set Play

#2 can also cut over the top of screens from #4 and #3, catch on the wing and attack the lane.