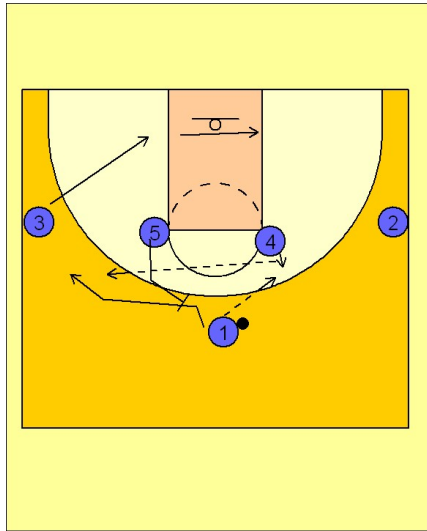


Louisville

Set play (1)

1



Louisville Set Play

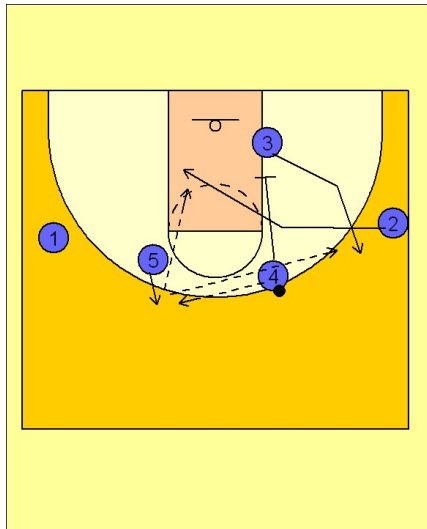
1 - 4 high alignment.

(#1) enters the ball to (#4).

(#3) breaks to the block and then across the lane.

(#5) sets a back screen and (#1) fades to the back side wing area for a skip pass from (#4) and shot.

2



Louisville Set Play

(#4) reverses the ball to (#5).

After (#4) passes he sets a down screen for (#3) on the block. As he is setting the down screen, (#2) cuts off of his back for a pass in the middle of the lane from (#5). (#5) may also hit (#3) for a jump shot coming off the down screen from (#4).