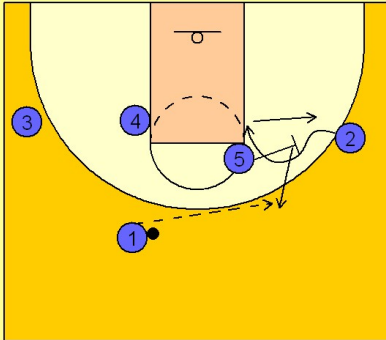


Louisville

Set play (10)

1

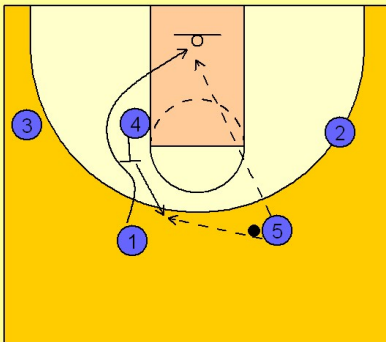
Louisville Set Play vs. Man Defense



#5 screens for #2 who curls over the top and back out to where he started. #5 screens and pops out to receive the pass from #1. A fancy way of entering the ball, but anytime you can screen and pop back to the ball, it will always increase your chances of being open to receive the entry pass.

2

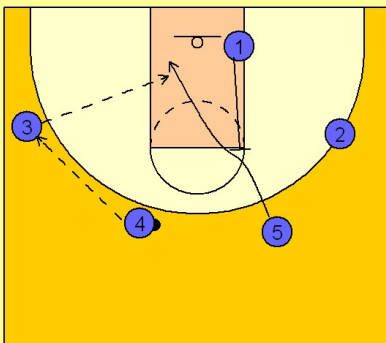
Louisville Set Play vs. Man Defense



#4 back screens for #1 who has just passed it over to #5. #1 cuts to the basket looking for the pass from #5. #4 pops out after back screening to receive the pass from #5.

3

Louisville Set Play vs. Man Defense



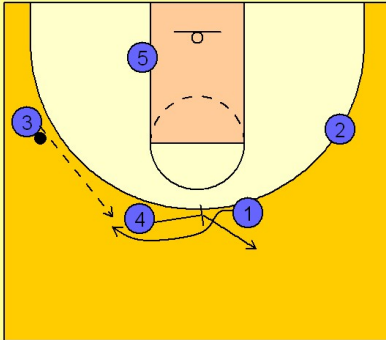
#4 passes over to #3. #5 now gets a back screen from #1. #5 cuts to the basket looking for the pass from #3.

Louisville

Set play (10)

4

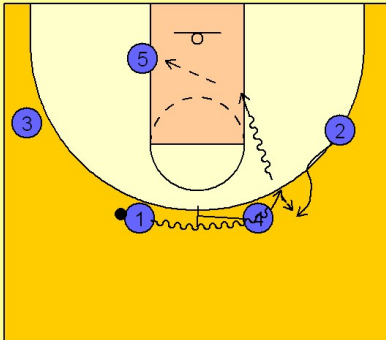
Louisville Set Play vs. Man Defense



#4 now screens across for #1. After screening, #4 breaks out to the area where #1 started. #3 passes to #1.

5

Louisville Set Play vs. Man Defense



#1 now gets a ball screen from #4. As #1 is coming off the ball screen from #4, #2 comes over the top of #1 looking for the dribble hand off. If #2 gets the ball he can look to shoot or score quickly off the dribble. #1 can also turn up after the screen and attack the basket to score or dump off to #5 if his man comes over to help.