

Louisville

Set play (11)

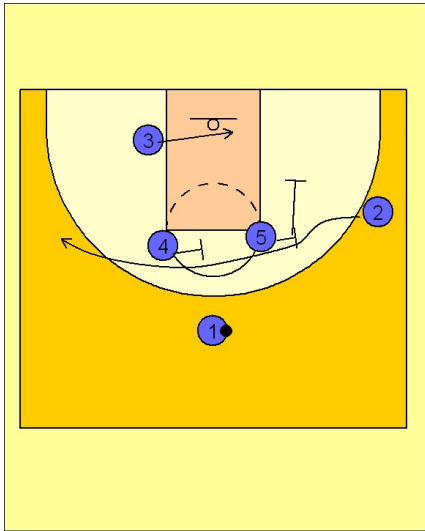
1

Louisville Set Play vs. Man Defense

Louisville uses this play as many teams do but we like what they do at the end of it that makes them a little unique.

#4 and #5 set screens for #2 as he comes over the top. This player rarely gets the ball as most of this initial action is to occupy the defense while wearing them down a bit.

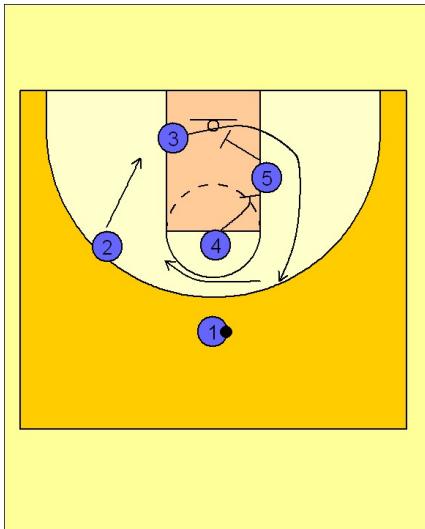
#3 moves across the lane ready to get some screens from #5 and #4.



2

Louisville Set Play vs. Man Defense

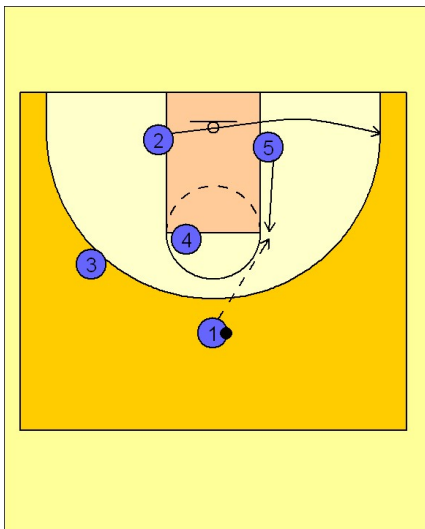
#3 curls off the screens from #5 and #4 but will usually not get the ball unless he is wide open. If one of these players should get the ball, you can continue the curling action with #4 and #5 screening for the next person in the rotation. #2 moves down to get into the next rotation.



3

Louisville Set Play vs. Man Defense

Here is where Louisville breaks off the pattern and runs some nice stuff. #5 now flashes quickly to the high post. #2 breaks out to the corner area on the ball side.

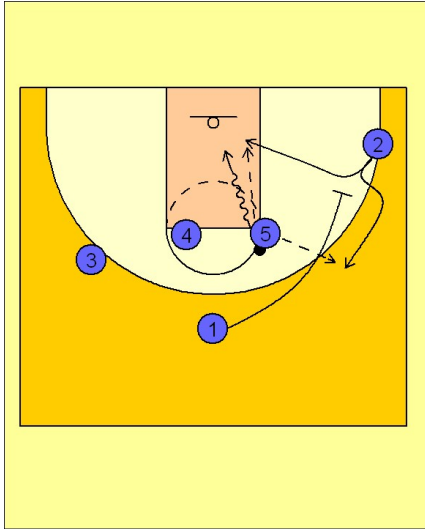


Louisville

Set play (11)

4

Louisville Set Play vs. Man Defense



#1, after passing to #5, screens down for #2. As you can see, #5 first has the opportunity to drive to the basket. Secondly he has the side cleared out for #1 and #2 to execute good screening action on the wing. #2 reads the defense and either fakes low and cuts high off the down screen from #1, or he can fake high and cut back door for the pass from #5.