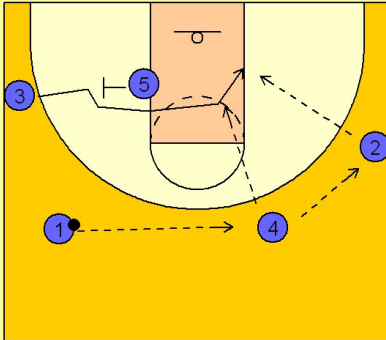


# Louisville

## Set play (2)

1

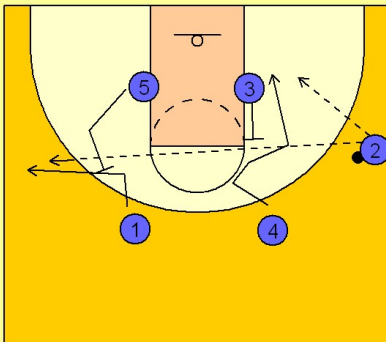
### Louisville Set Play



(#1) reverses the ball to (#4) who passes to (#2) on the wing. (#5) steps out and sets a back screen for (#3) who breaks to the ball side block looking for a pass from (#2) or (#4) and a lay-up.

2

### Louisville Set Play

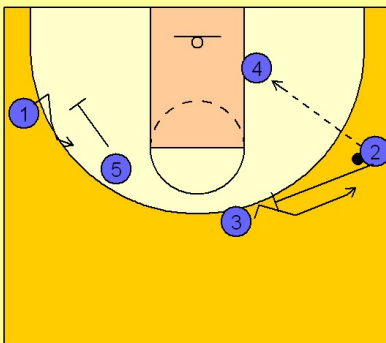


Once (#2) receives the ball, (#5) sets a back screen for (#1) who fades to the back side of the floor for a skip pass from (#2) and a shot opportunity.

After (#4) passes to (#2), he receives a back screen from (#3) bringing him to the ball side block for a post up opportunity.

3

### Louisville Set Play



If (#4) is open he receives a pass from (#2). When the ball enters the post in all of Louisville's offensive alignments they will always screen away on the perimeter looking to free shooters for some good inside / out action. Plus this screening action near and away from the ball will keep defenders from doubling the ball and will make their defensive runs back to their players that much more difficult.