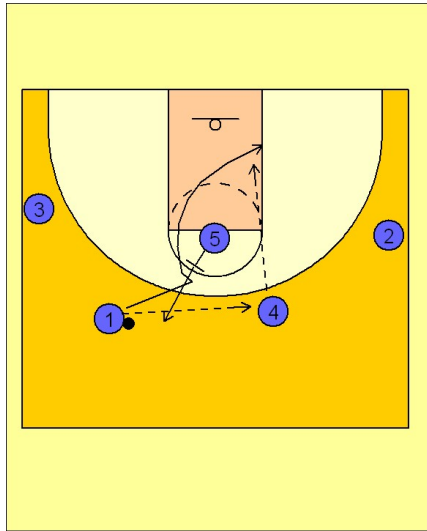


# Louisville

## Set play (6)

1

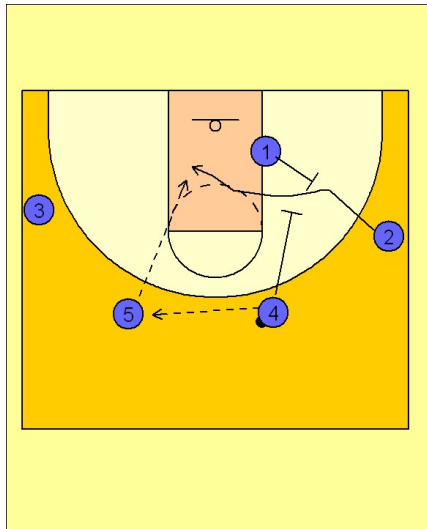


Louisville Set Play

Out of their familiar 2 - 3 high alignment.

(#1) passes to (#4) and then cuts to the ball side block off the back screen from (#5). (#5) steps out after the screen.

2

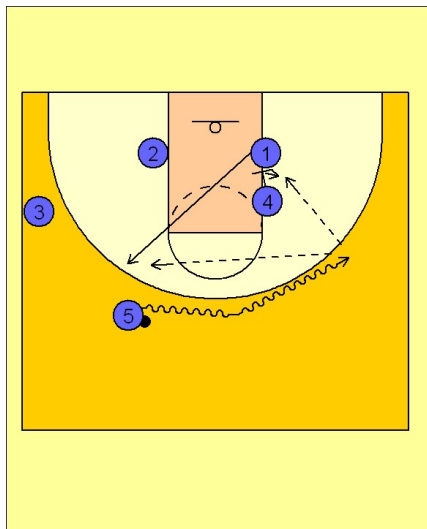


Louisville Set Play

(#4) passes the ball to (#5).

(#1) steps out and sets a back screen for (#2) who cuts to the ball side block looking for a pass from (#5). (#4) sets a down screen for (#1).

3



Louisville Set Play

(#1) can use the down screen from (#4) but will often come out to the opposite side of the floor on top because of the dribble action of (#5).

(#5) brings the ball over to (#4) on the block while (#1) pops out to the top on the opposite side.