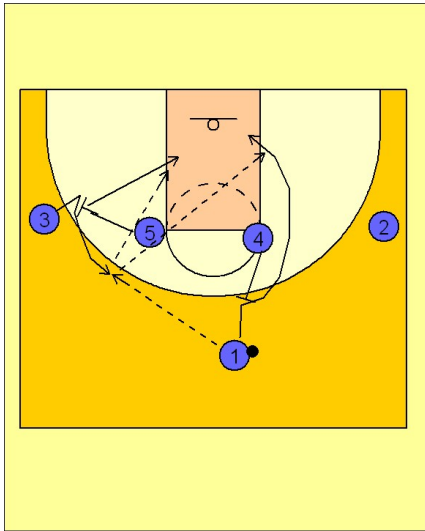


Louisville

Set play (7)

1



Louisville Set Play

1 - 4 high alignment to start.

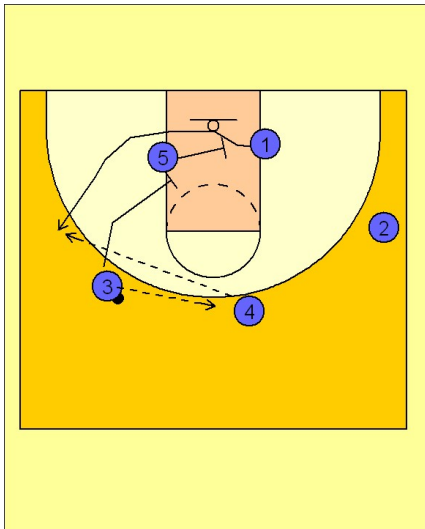
(#5) starts the play by screening away for (#3).

(#1) enters to (#3) on top and then receives a back screen from (#4).

(#1) cuts to the basket.

(#5) rolls to the basket after screening for (#3). (#3) has the option to hit (#1) cutting to the basket or (#5) rolling to the basket.

2



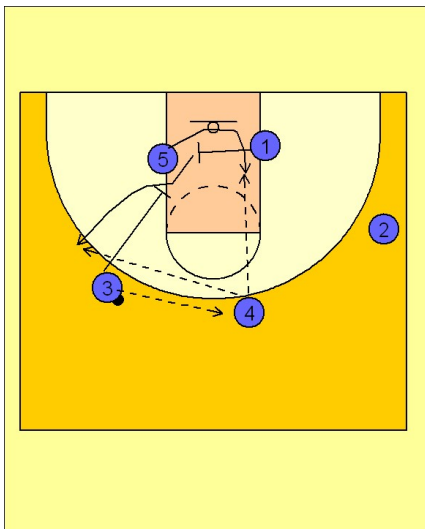
Louisville Set Play

(#3) passes to (#4).

(#5) and (#3) set down screens for (#1).

(#4) will look to hit (#1) coming off the staggered screens for the shot.

3



Louisville Set Play

Another option Louisville has used out of this alignment is for (#1) to screen across for (#5) and then to come off the down screen from (#3).

(#4) would first look to (#5) on the post up and then (#1) coming off the down screen from (#3).