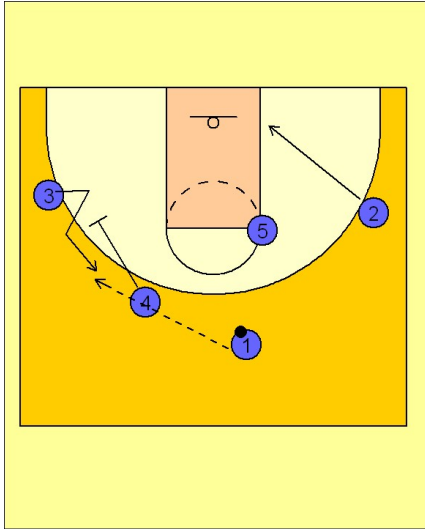


Louisville Set play (8)

1

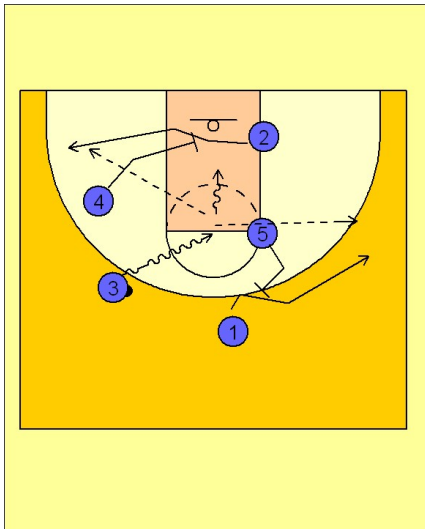


Louisville Set Play

Great set with a two good options at the end.

(#4) screens away for (#3).
(#2) moves down to the block.
(#1) enters the ball to (#3).

2

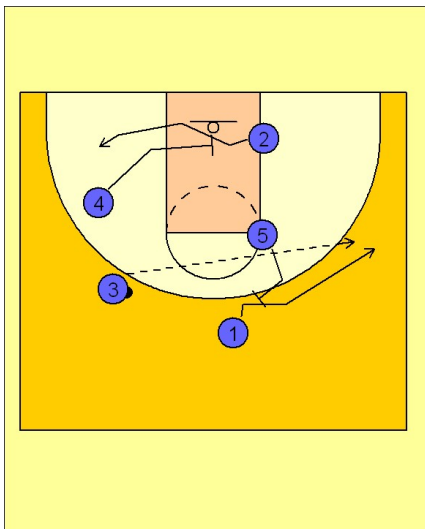


Louisville Set Play

From here you have two good options.

(#3) can drive the ball to the middle looking to score while (#1) fades to the back side of a back screen from (#5). At the same time (#2) is coming out the other side off of a screen from (#4). (#3) can hit (#1) fading to the wing or hit (#2) coming off the down screen from (#4). He obviously has the option to drive all the way to score as well. This scoring mentality from (#3) will always make the play more effective because he will drive harder creating help situations from the other defenders.

3

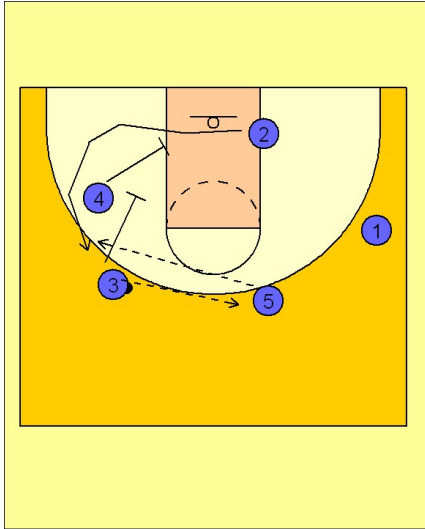


Louisville Set Play

The other option if for (#3) not to penetrate and instead hit (#1) fading to the opposite wing or (#2) coming off of (#4's) screen.

Louisville Set play (8)

4



Louisville Set Play

If (#1) or (#2) are not open, (#3) passes to (#5) stepping out after back screening for (#1). (#3) then joins (#4) by screening down for (#2). (#5) can look to hit (#2) for the jumper off the double staggered screen.