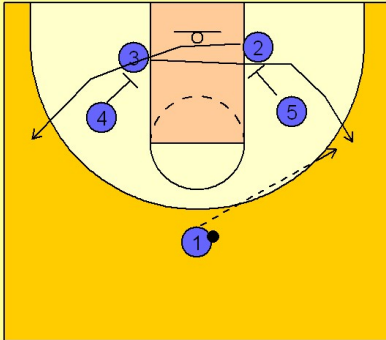


Louisville

Set play (9)

1

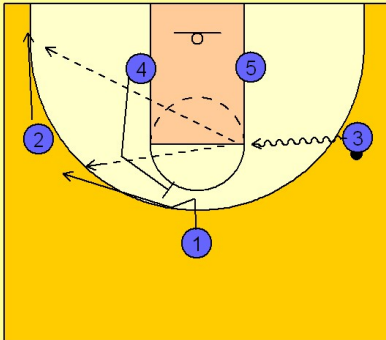
Louisville Set Play



(#2) and (#3) cross out underneath off of down screens from (#4) and (#5). (#1) enters to a wing, in this diagram we will have him enter to (#3) on the right wing.

2

Louisville Set Play



(#3) then looks to penetrate to the middle while (#4) sets a back screen for (#1) fading to the opposite wing. (#2) moves down to the opposite corner area. (#3) has the option to kick it to (#1) or (#2).