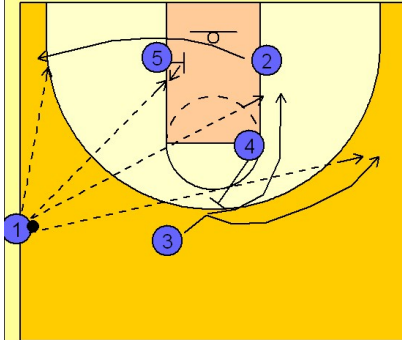


Marquette

Ob side out (1)

1

Marquette Side OB vs. Man Defense

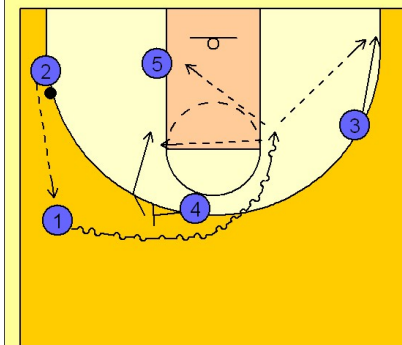


#2 cuts to the ball side corner off the screen on the left block from #5. #4 is back screening for #3 who either cuts to the basket or fades to the opposite wing area.

The first look is usually to either #5 inside for the lob or direct post pass as #2 is taking away the back side defensive help. The next look is then to #2 in the corner. #3 is usually a third or rarely used option.

2

Marquette Side OB vs. Man Defense



If the ball goes to #2 in the corner he will throw back to #1 stepping inbounds and then #4 will step out and ball screen while #1 attacks the basket off the ball screen.

#1 can look to drive and score, drive and kick out to #3 on the right wing, or dump off to #5 or #4 depending on how they defend the pick and roll and if #5's man comes over to help.