

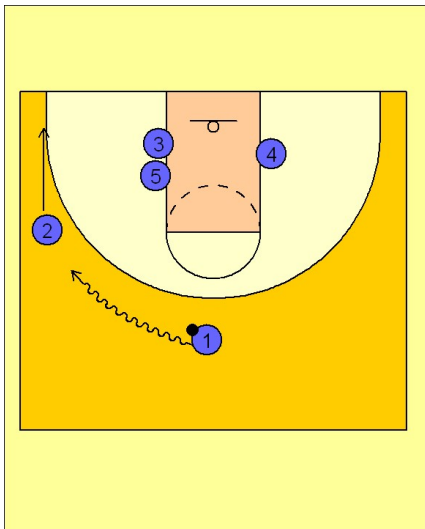
Marquette

Set play vs. man defense (8)

1

Marquette Set Play vs. Man Defense

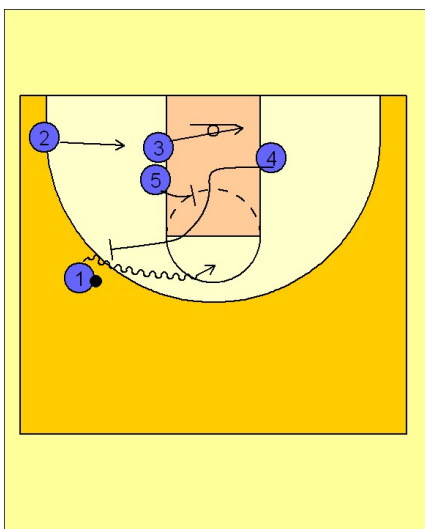
#1 drives the ball at #2 on the left wing and pushes him to the corner.



2

Marquette Set Play vs. Man Defense

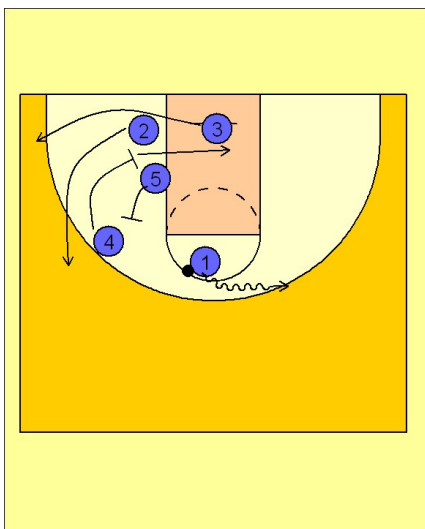
Once #1 makes it to the wing area on the dribble, #4 breaks out off of a screen from #5. #4 moves out off of #5's screen to set a ball screen for #1. As #1 comes off the ball screen from #4, #3 cuts underneath the basket while #2 moves down to the low block area.



3

Marquette Set Play vs. Man Defense

If #1 does not have a scoring opportunity off the ball screen, #4 gets a back screen as he cuts down to set a screen for #2 and #3. #4 then flashes across the lane to the ball. #2 breaks out to the left wing while #3 comes out to the left corner away from the ball.

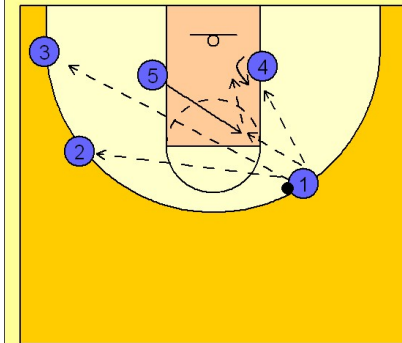


Marquette

Set play vs. man defense (8)

4

Marquette Set Play vs. Man Defense



#1 can pass back against the grain to #2 or #3 coming out to the left side wing and corner areas, or, he can look for #4 ducking in the post or #5 flashing into the high post area for the high / low game with #4.