

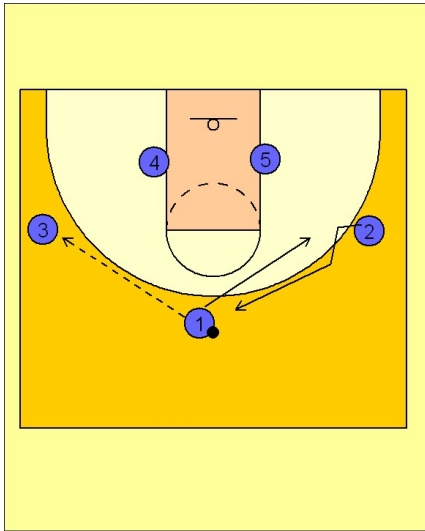
Marquette

Set play vs. zone (1)

1

Marquette Set Play vs. Zone

3 out 2 in alignment. #1 enters to the left wing player #3. #1 will cut away and #2 will replace #1 on the top of the key area.



2

Marquette Set Play vs. Zone

#3 reverses the ball back to the top man #2. As the ball is reversed to #1, #4 comes to the ball side and back screens the low zone defender. While this is happening, #5 moves across away from the ball and screens the back side low defender. #3 will sneak in behind the defenders for a lob pass or a direct pass for a layup.

