

Maryland

Early offense (1)

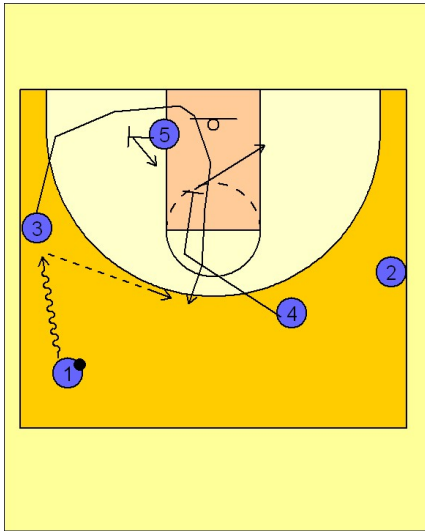
1

Maryland Early Offense

The point guard (#1) pushes the ball up the sideline.

In this diagram, (#1) dribble clears the (#3) wing man.

(#3) gets a screen from (#5) on the block and then another screen from (#4) as he is coming up the lane.



2

Maryland Early Offense

Once the ball is entered to (#3), he will look to shoot, dump it in to (#5 or #4), or penetrate and kick to (#2) on the wing.

