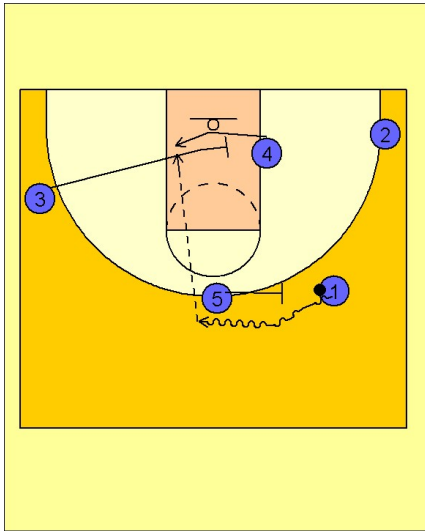


# Maryland

## Early offense (3)

1



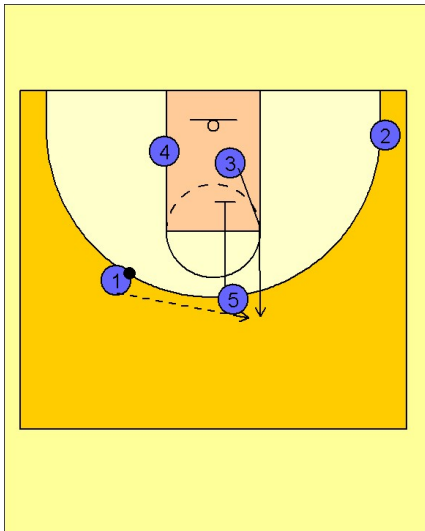
### Maryland Early Offense

#1 turns his dribble into the middle and uses a ballscreen from #5 trailing the play.

As #1 brings the ball over the top of the ballscreen, #3 is sprinting into the lane to set a cross screen for #4.

#1 looks to #4 inside coming off the screen.

2



### Maryland Early Offense

If #4 does not receive the ball, #5 sets a downscreen for #3 who then looks to get open on top for the jumper.