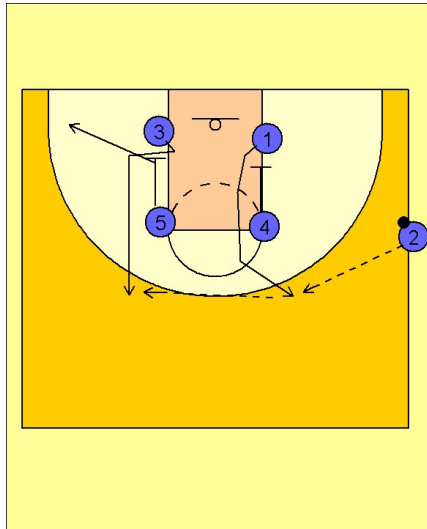


Maryland

Ob side out (1)

1



Maryland OB Side Out

(#2) takes the ball out of bounds.

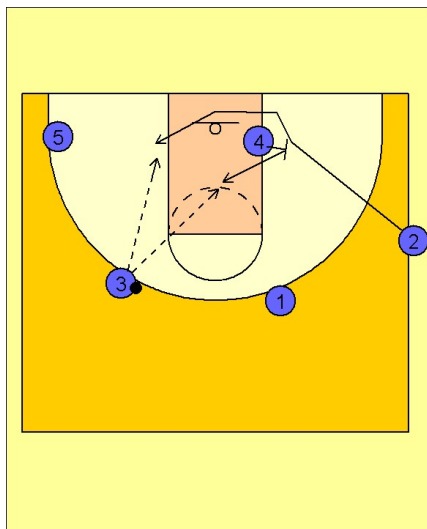
(#4 and #5) down screen for (#1 and #3).

(#1) comes up the middle looking for the entry pass from (#2).

(#3) comes up the outside looking for a reverse pass from (#1).

After (#5) screens he pops out, clearing the lane area.

2

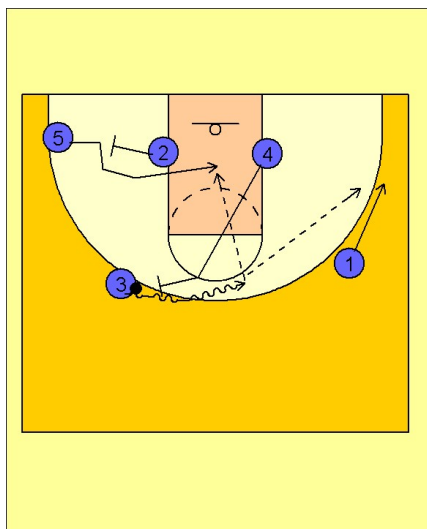


Maryland OB Side Out

Once (#2) enters the ball, he cuts down to the block coming off of a baseline screen from (#4). After (#4) sets the screen, he rolls back into the paint looking for the ball.

(#3) has the option to hit the cutting (#2) man first, then to look for the (#4) man rolling back into the paint.

3



Maryland OB Side Out

If those two options are not there, (#4) continues up the lane and sets a ball screen for (#3).

As (#3) is driving the ball of the ball screen from (#4), (#2) is stepping out and setting a back screen for (#5) in the corner.

(#3) looks to drive it off of the ball screen into the gaps, either taking the shot, kicking it out to the (#1) man who is fading to the corner of hitting the (#5) man coming off of the screen across the middle.

Maryland

Ob side out (1)

4

Maryland OB Side Out

Another option on this play occurs when the ball is enter to the player in the left wing / corner area, #5 in this diagram.

When that happens, #4 moves up to set a backscreen for #3. #5 looks to #3 cutting in the lane.

