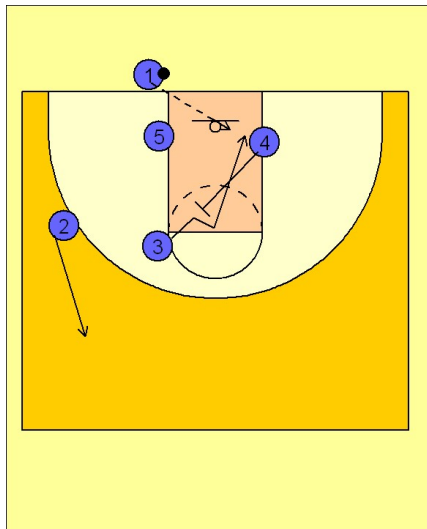


# Maryland

## Ob under (3)

1

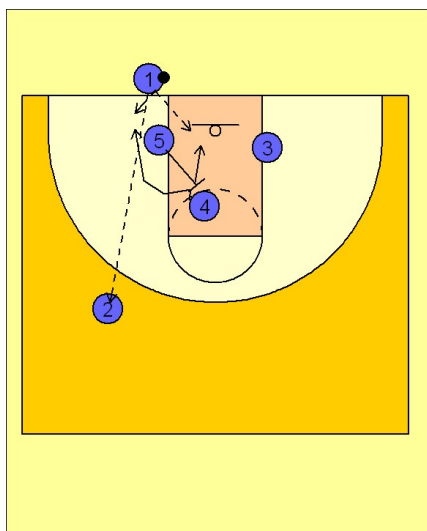


Maryland OB Under

(#4) initiates the start of the play by setting a back screen on (#3), who breaks to the basket looking for a pass from (#1).

(#2) breaks out on top for a safety release valve.

2



Maryland OB Under

After (#4) sets the screen, (#5) steps up and sets a back screen for (#4) who breaks to the ball side block, which is good "pick the picker" action in the post.

After (#5) screens he rolls into the middle of the lane, looking for a layup.

If these first three options are not open, he may use his "safety valve" option and pass it deep to (#2).