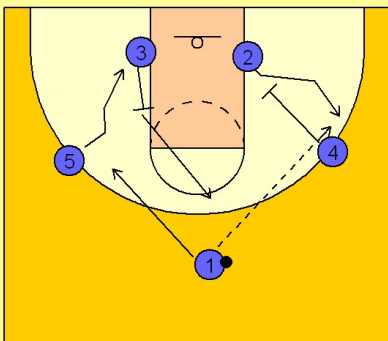


Maryland

Quick hitter (11)

1

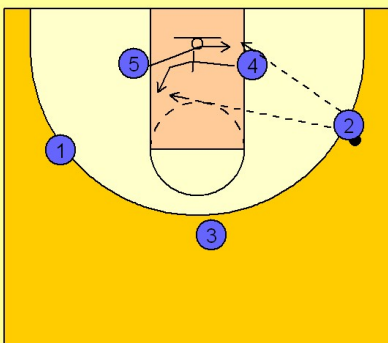
Maryland Quick Hitter



(#4) down screens for (#2) on the right wing.
 (#3) sets a back screen for (#5) on the left wing.
 (#1) enters the ball to the right side (#2).
 (#3) after screening, breaks to the top of the key.
 (#1) cuts away to the opposite wing area.

2

Maryland Quick Hitter



Once (#2) receives the ball, (#4) continues across the lane and screens for (#5) for the quick post up. After screening, (#4) steps up to the middle of the lane for the entry pass from (#2).