

Maryland Set play (10)

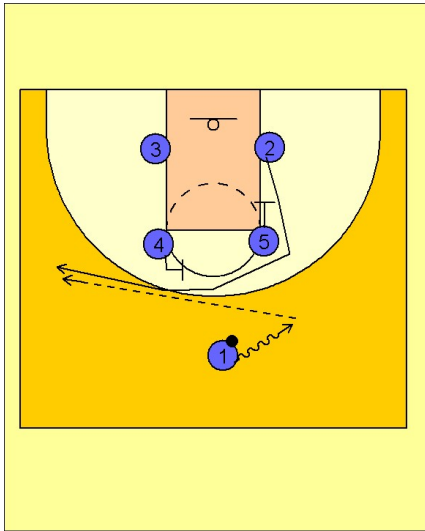
1

Maryland Set Play

Box set to begin.

#1 drives the ball to the right side of the floor. As this is happening, #5 sets a downscreen for #2. #2 breaks up and then over to the left wing area off another screen from #4.

#1 passes against the grain to #2 on the left wing.



2

Maryland Set Play

On the catch, #2 is looking to feed the low post player #4 or look for #3 coming off the double screen from #5 and #1.

