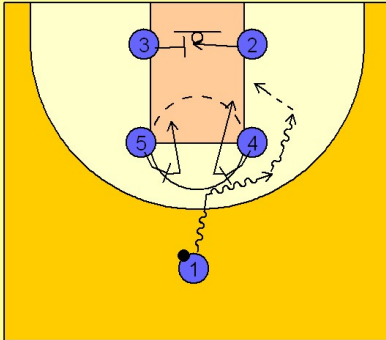


Maryland Set play (2)

1

Maryland Set Play



This play is often referred to as "America's Play", with just a little twist to it.

(#4 and #5) set up for a ball screen for (#1).

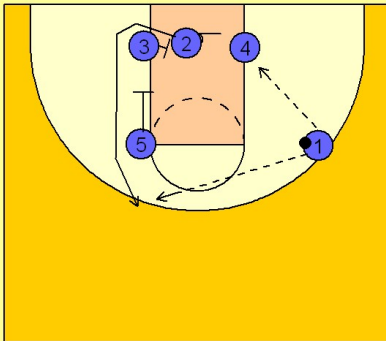
(#1) has the option to drive off the screen of either player.

In this diagram, he chooses to drive off the screen of (#4). As this screen is happening, (#) on the opposite low block is stepping into the lane to screen for (#2) who is preparing to use the screen to get open for a shot on the other side.

(#5) slides down into the lane looking to find (#2's) defender. (#4) rolls to the basket after the ball screen looking for a post pass from (#1).

2

Maryland Set Play



(#2) comes off of (#3's) screen and (#5's) down screen looking for a jump shot out front. As we mentioned in the last diagram, (#1) has the option to make a post pass to (#4) or hit the (#2) man off of the staggered screen action on the other side of the floor.