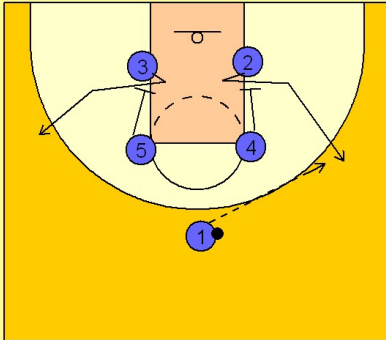


Maryland Set play (3)

1

Maryland Set Play

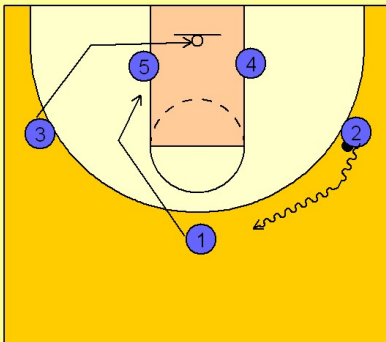


(#4 and #5) set down screens for (#2 and #3). Both players then pop to their respective wing areas.

In this diagram we will have (#1) enter the ball to the right side (#2).

2

Maryland Set Play

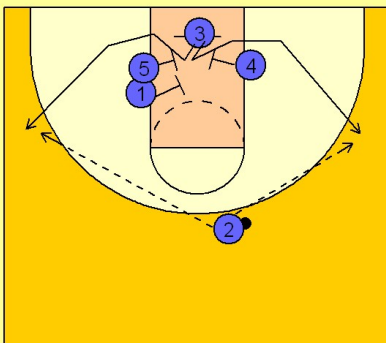


(#2) will take the ball on the dribble to the top of the key area.

The opposite wing player (#3) slides into the lane underneath the basket, while (#1) moves down to join (#5) on the block.

3

Maryland Set Play



(#3) then has the option to come off the single screen set by (#4) or the double screen from (#3 and #5).

(#2) will then look to hit (#3) for the jump shot on either wing.

Maryland

Set play (3)

4

Maryland Set Play

If (#2) enters to (#3) on the left side, one option is to continue the play as (#1) comes off of a screen from (#4 and #2) for a shot at the top of the key area.

