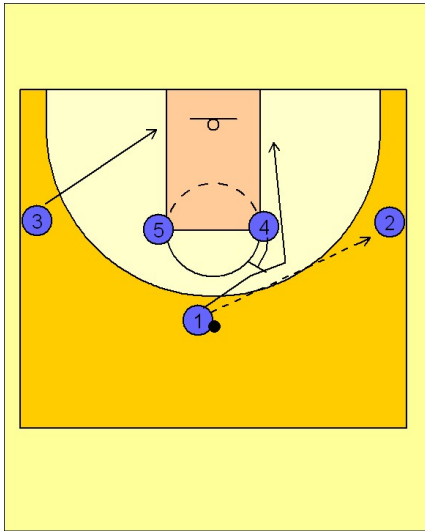


Maryland Set play (4)

1



Maryland Set Play

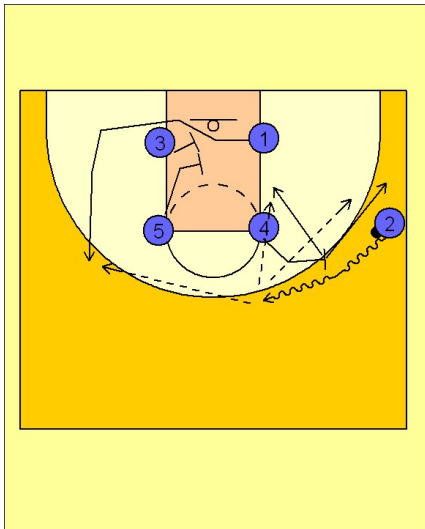
1 - 4 high alignment.

(#1) enters the ball to a side. In this diagram, he enters the ball to (#2).

(#4) steps out to set a back screen for (#1) cutting to ball side block.

The opposite wing player, (#3), runs down to the opposite block.

2



Maryland Set Play

(#2) has the ball with (#4) coming out to set a ball screen.

As this is happening, (#1) will come off of the double screen set on the back side by (#3 and #5).

(#2) has the option to hit (#1) coming off of the double screen or he can hit (#4) rolling to the back or popping back out after the ball screen.