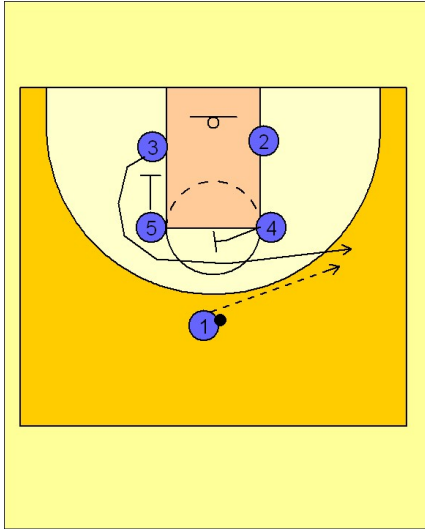


Maryland Set play (5)

1



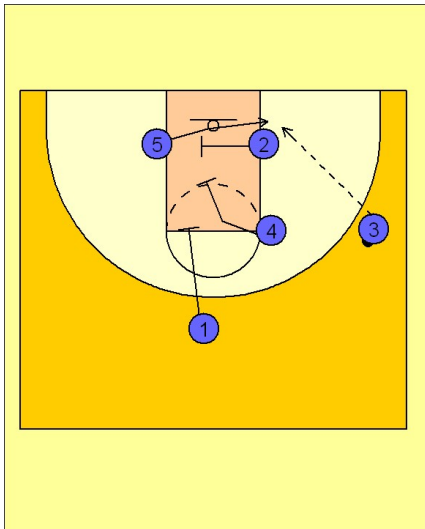
Maryland Set Play

Box set to begin.

(#5) sets a down screen and (#4) sets a cross screen for (#3) who comes out to the ball side wing.

(#1) enters the ball to (#3) on the right side.

2

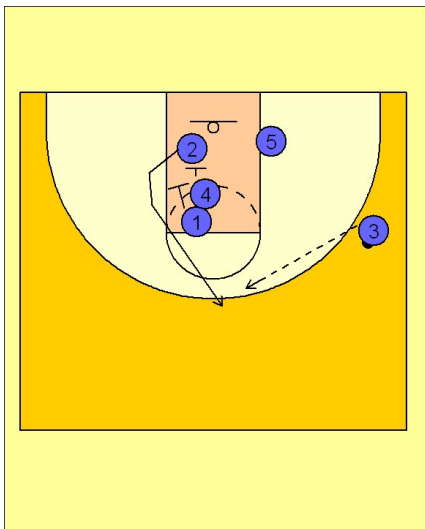


Maryland Set Play

After (3) receives the entry pass, (#2) screens across for (#5) looking for the post entry pass from (#3).

(#1 and #4) begin their movement into the lane to set down screens for (#2).

3



Maryland Set Play

After (#2) cross screens for (#5), he receives a double or staggered screen from (#1 and #4).

(#2) comes to the top of the key area looking for the three point shot.