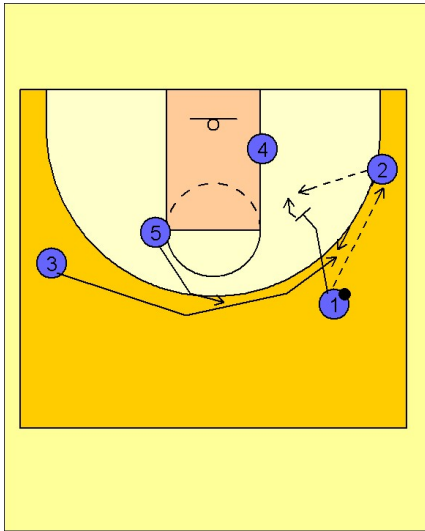


Maryland

Set play vs. zone (1)

1



Maryland Set Play vs. Zone Defense

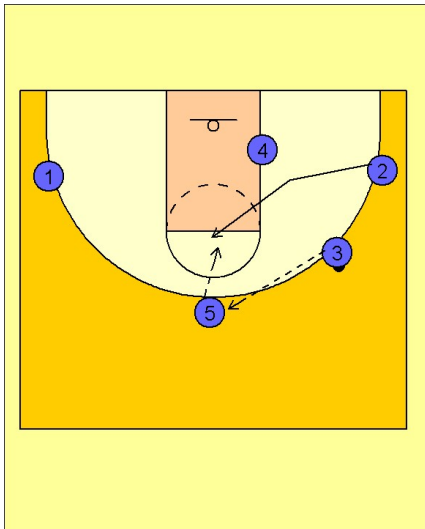
#1 moves the ball to the right side of the floor while #3 starts to make his cut to the right side of the floor behind #1.

As this is happening, #5 moves out to the top of the key area.

#1 now passes to #2 on the right wing and screens in on the zone defender creating a "whole" behind him for #3 to fill and look for the pass back from #2 and the open jumper.

If the defense tries to get through and defend the shot, #1 steps into the gap and looks for the pass from #2. If #1 does not receive the ball, he will cut through and out to the opposite wing area.

2



Maryland Set Play vs. Zone Defense

If #3 receives the ball and does not have a shot, he will reverse the ball to #5 on top while #2 will break into the high post area looking for the pass and turnaround jumper.