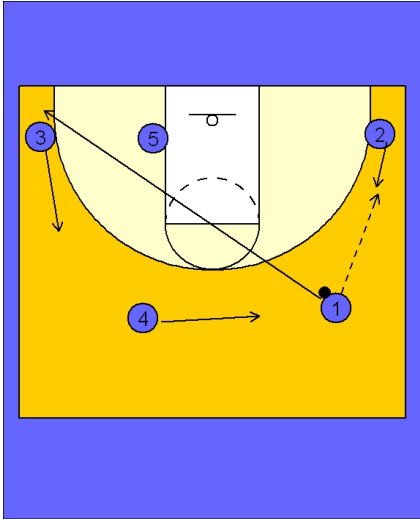




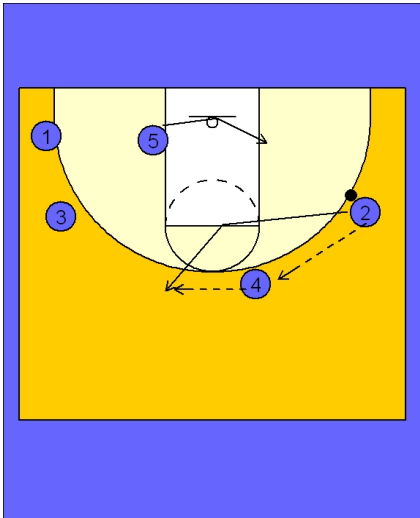
Set play vs. man defense (11)



Dribble Motion Set

#1 enters the ball to #2 in the right corner stepping up to receive the pass and then #1 cuts through the lane to the opposite corner.

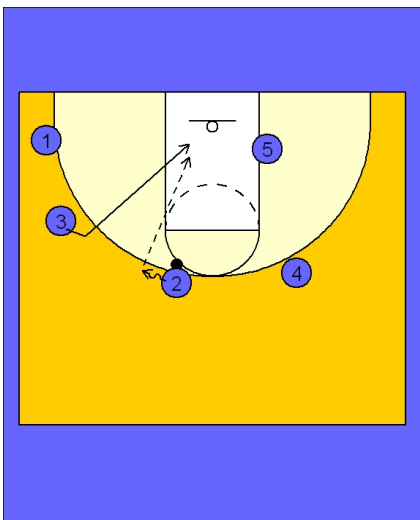
#3 and #4 slide up and over to complete the floor balance.



Dribble Motion Set

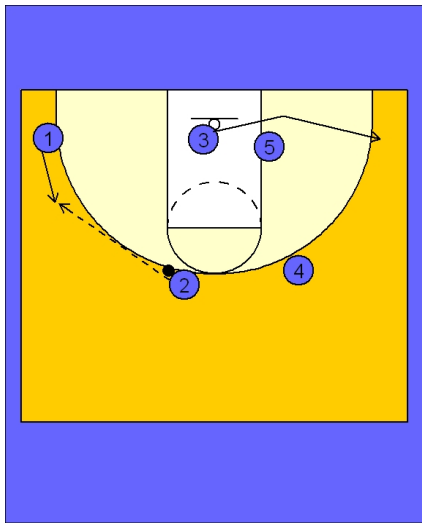
#2 passes to #4 on top and loops through the FT line area and back out on the top of the key.

#4 passes to #2 on top while #5 loops under the basket keeping opposite the ball on top.



Dribble Motion Set

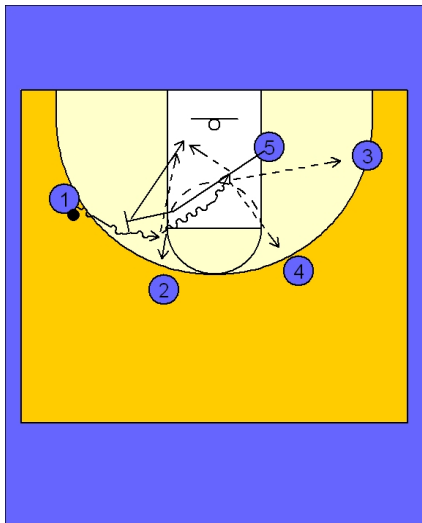
#2 takes a dribble at #3 who cuts back door. #2 delivers the pass if #3 is open.



Dribble Motion Set

#1 moves up to fill the spot vacated by the cutting #3.

#2 passes to #1 on the left wing while #3 has now cut through the lane and out to the opposite corner area.



Dribble Motion Set

Once #1 has the ball on the wing, #5 will sprint out to set a ball screen for #1 on the left wing.

#1 comes hard off the ball screen looking to get in the lane for the layup. #5 rolls hard looking for the dump off pass from #1.

#3, #4 and #2 are spotting up on the perimeter looking for the kick out from #1 and the "3" point shot.