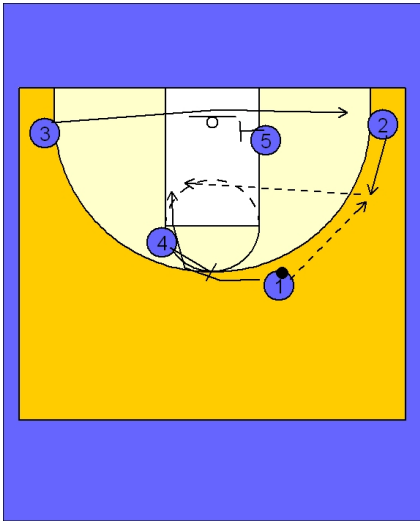




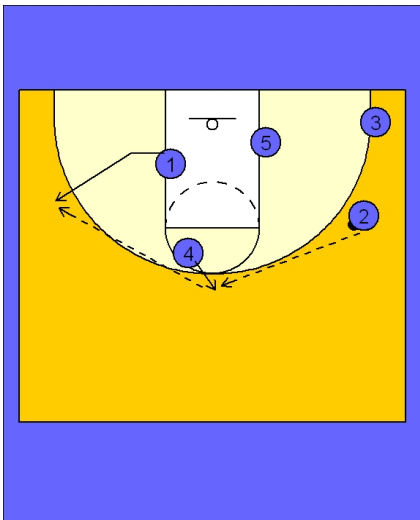
### Set play vs. man defense (15)



#### Dribble Motion Set

#2 moves up from the right corner to receive the pass from #1. As this action is taking place, #5 screens (optional) for #3 cutting to the ball side corner area.

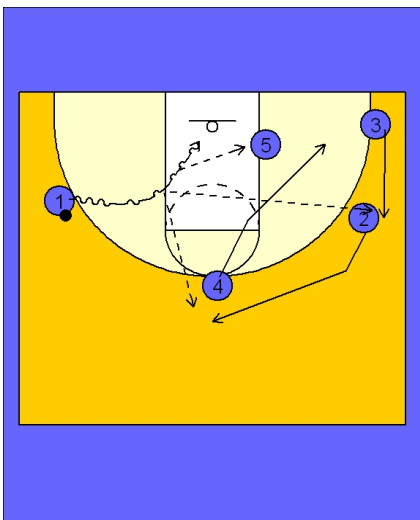
As #1 passes to #2, #4 is setting a back screen for #1. #1 cuts to the basket looking for the lob pass from #2.



#### Dribble Motion Set

If #1 did not receive the pass, #4 will step out and receive the pass from #2. #1 did not get the ball and then will cut out to the left wing area.

#4 reverses the ball to #1.



#### Dribble Motion Set

As soon as #4 passes to #1 on the left wing, #4 will clear out to the opposite corner area while #2 and #3 move up for proper spacing.

As this action is taking place, #1 is looking to get in the lane to score or kick out to #2 or #3 or dump it off to #5.