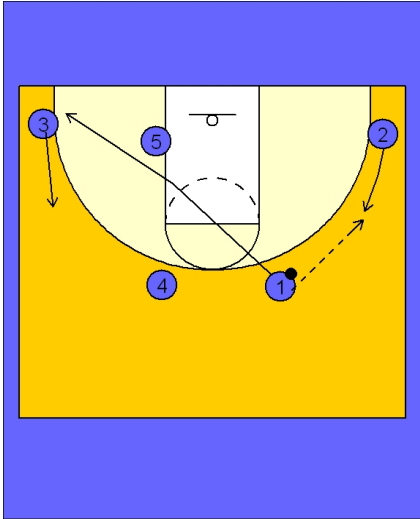




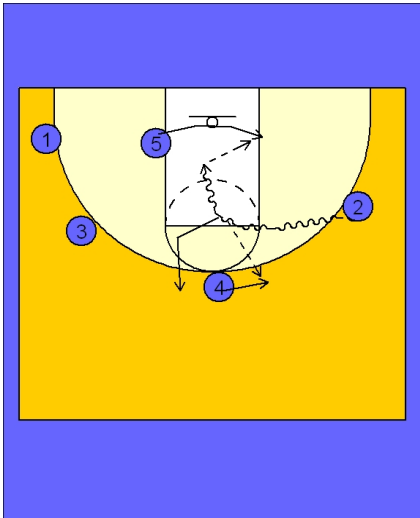
Set play vs. man defense (16)



Dribble Motion Set

#2 slides up a bit from the right corner and receives the entry pass from #1.

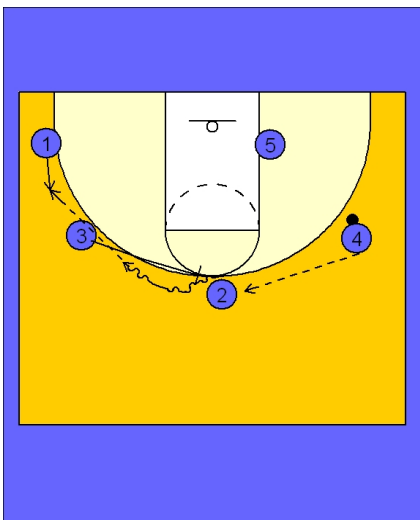
#1 passes the ball to #2 and cuts through to the opposite corner area. #3 slides up to the wing area for proper spacing.



Dribble Motion Set

As #1 clears out #2 looks to attack the middle of the lane trying to get to the basket. As this action is taking place, #5 is looping under the basket looking for a potential dump off pass from #2.

If #2 does not get into the lane to score, he will kick the ball out behind him to #4 and then will cut out to the top area of the floor.



Dribble Motion Set

#4 passes the ball to #2 on top and then receives a quick ball screen from #3.

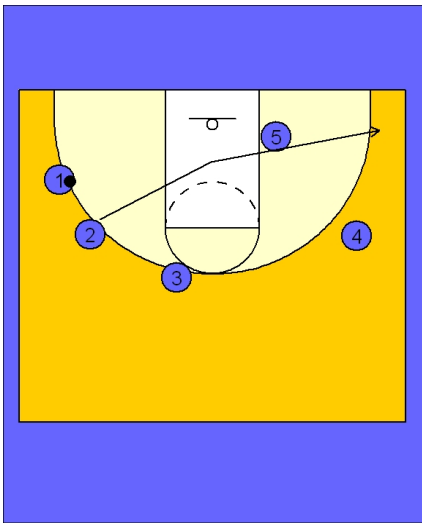
#2 comes off the ball screen and can look to attack the rim if the option is available.

If not, #2 will pass to #1 stepping up from the left wing.



Dribble Motion Set

As soon as #2 passes to #1 he will clear out to the opposite corner area.



Dribble Motion Set

#1 will now look to attack the lane area for the layup. If he doesn't score he will look to kick out to either #2, #4 or #3...or dump the ball off to #5 inside.

