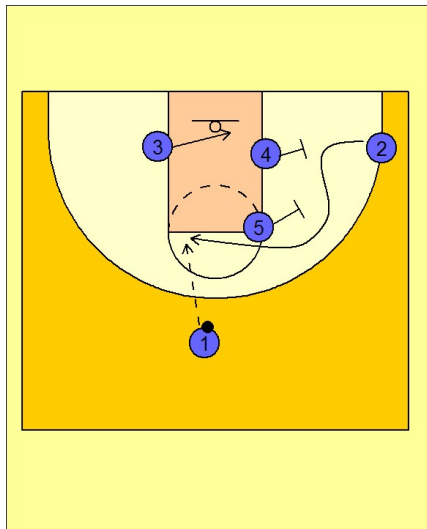


Memphis

Set play vs. man defense (1)

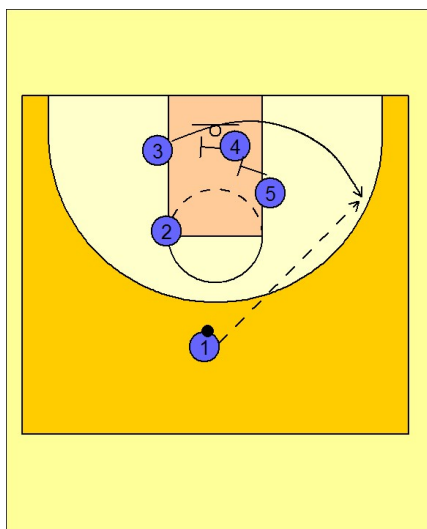
1



Memphis Set Play vs. Man Defense

#1 has the ball on top. #4 and #5 sets screens for #2 on the right wing. #2 curls over the top of the screens looking for the ball on top. #2 rarely gets the ball in this situation, but if he does, #3 is already on the move clearing out for #2 to penetrate.

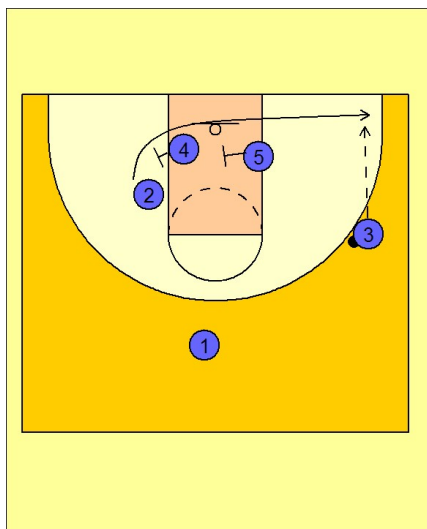
2



Memphis Set Play vs. Man Defense

If #2 does not get the ball, #4 and #5 move into the lane and set double staggered screens for #3 coming out to the right wing area. #1 will usually hit #3 here.

3



Memphis Set Play vs. Man Defense

If #3 does not have a shot, #4 and #5 continue to screen across for #2, who has now come around again looking to pop out to the ball side corner for the shot.