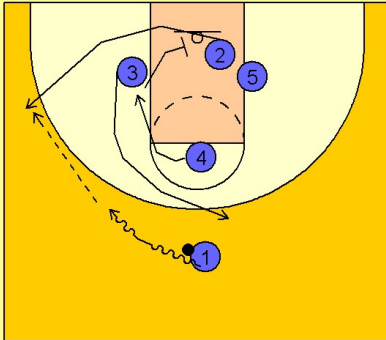


Memphis

Set play vs. man defense (10)

1

Memphis Set Play vs. Man Defense

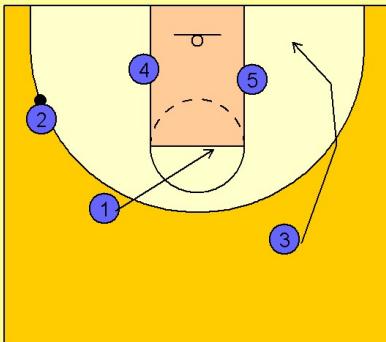


This play starts out with what we call in the business, "false motion". Just some movement to kill some time off the shot clock before getting into the "meat" of your play.

Here we see #3 and #4 exchange spots on the floor, with #4 setting a screen for #2 to get open on the wing. #2 is not necessarily looking to catch and score, again, just some false motion to take away some time off the clock.

2

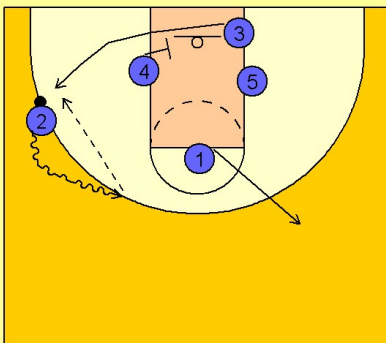
Memphis Set Play vs. Man Defense



As soon as #1 passes to #2 on the left wing, #1 cuts to the high post while #3 cuts down underneath the basket area.

3

Memphis Set Play vs. Man Defense



Now this is the primary action they are looking for on this play. #2 takes the ball up on the dribble while #4 sets a screen for #3 breaking out to the left wing / corner area.

#1 steps out to the opposite side of the floor on top.

Memphis

Set play vs. man defense (10)

4

Memphis Set Play vs. Man Defense

If #3 does not have the shot, he will look to feed the post player #4 on the left low block. #5 could flash to the high post or remain on the right low block for rebound position.

