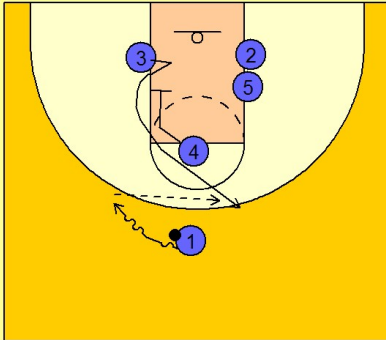


# Memphis

## Set play vs. man defense (3)

1

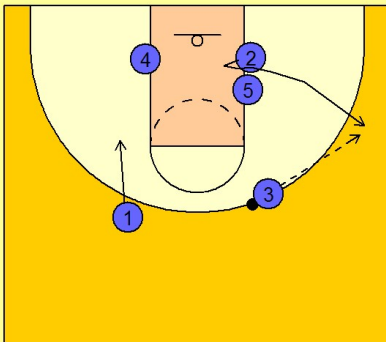
### Memphis Set Play vs. Man Defense



#4 down screens for #3 to start the play. #1 takes the ball towards #3's side. #3 comes off the down screen and breaks out to the opposite side of #1. #1 enters the ball across the top to #3.

2

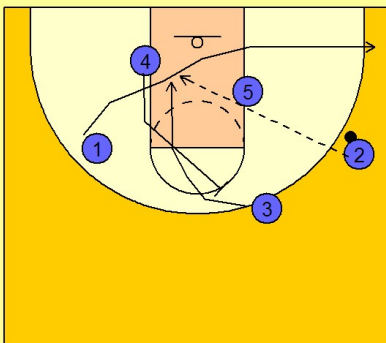
### Memphis Set Play vs. Man Defense



Once #3 has the ball, #1 cuts down the left lane line. #2 fakes in and cuts out to the right side looking for the pass from #3.

3

### Memphis Set Play vs. Man Defense

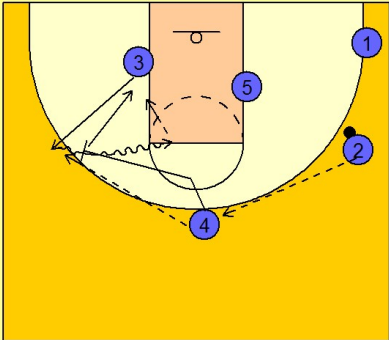


As #2 receives the pass, #1 clears out to the ball side corner while #4 moves up and back screens for #3. #3 cuts to the basket off the back screen from #4. #2 looks to lob the ball to #3.

## Set play vs. man defense (3)

4

## Memphis Set Play vs. Man Defense



#4 steps out after back screening to receive the pass from #2. #3 breaks out to the left wing. #4 passes to #3 and then comes over and ball screens on the left side. #3 and #4 execute the pick and roll.