

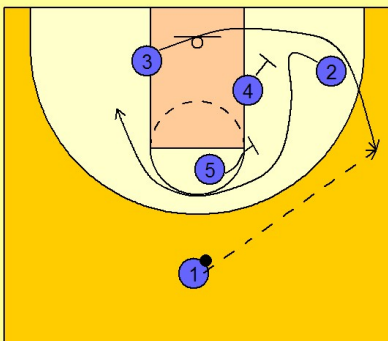
Memphis

Set play vs. man defense (4)

1

Memphis Set Play vs. Man Defense

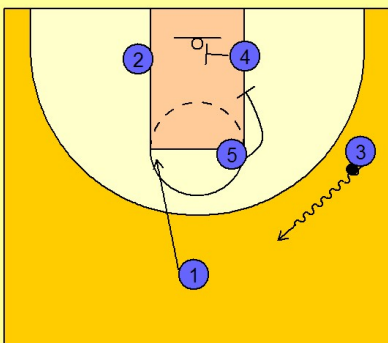
The usual beginning to a lot of Memphis' set plays. #4 and #5 screen down for #2 who breaks up and around the top. #3 follows behind #2 breaking out to the right wing.



2

Memphis Set Play vs. Man Defense

Once #3 receives the ball he dribbles up to the top. #4 and #5 move down to set a double staggered screen for #2 on the right side while #1 moves down to set a single screen on the left side for #2.



3

Memphis Set Play vs. Man Defense

#3 now looks for #2 coming out in either direction.

