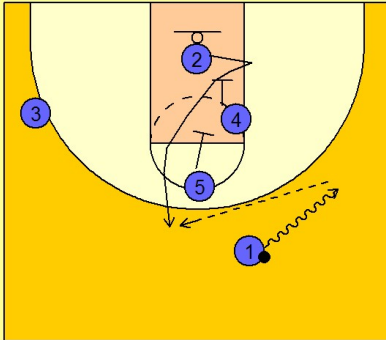


Memphis

Set play vs. man defense (5)

1

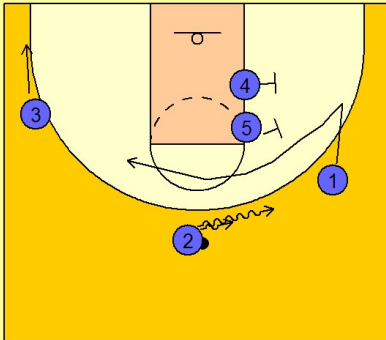
Memphis Set Play vs. Man Defense



#1 drives the ball to the right wing area while #4 and #5 down screen for #2. #2 breaks straight up to the top of the key area and receives an entry pass from #1.

2

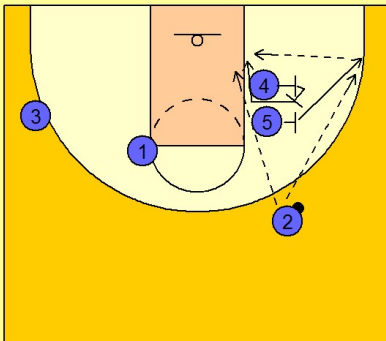
Memphis Set Play vs. Man Defense



Once #2 catches the ball he drives it towards #1 on the right wing. #1 cuts off a double screen from #4 and #5.

3

Memphis Set Play vs. Man Defense



After #1 cuts over their screen, #4 turns and screens for #5 to fade to the corner for the shot. After screening, #4 rolls to the post area looking for an entry pass from either #2 on top or from the corner player #5.