

Memphis

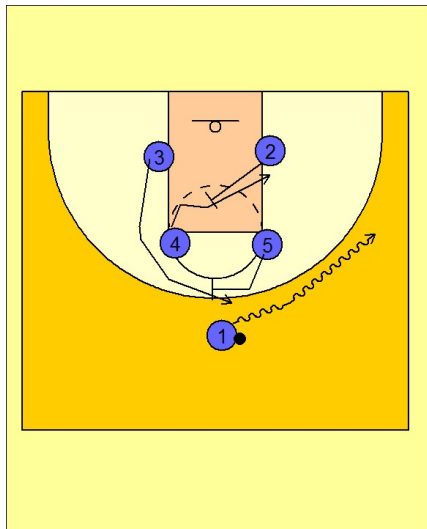
Set play vs. man defense (6)

1

Memphis Set Play vs. Man Defense

Box set to begin.

#1 takes the ball on the dribble to the right wing area. #2 sets a diagonal back screen for #4. #4 posts up on the right low block. As #1 dribbles to the right wing area, #5 steps out and over to set a screen for #3 breaking to the top of the key area.



2

Memphis Set Play vs. Man Defense

#1 reverses the ball to #3 on top. #5 turns around and sets a ball screen on top for #3. As #3 comes over the top of the screen, #2 is screening across the lane for #4. #3 looks to make the post entry pass to #4 on the left low block.

