

# Memphis

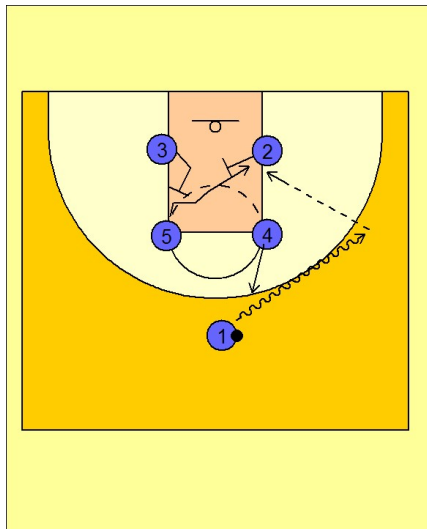
## Set play vs. man defense (7)

1

### Memphis Set Play vs. Man Defense

Box set to begin.

#1 drives the ball to the right wing area. As this is happening, #3 and #2 set diagonal back screens for #5 bringing him to the ball side low block. #1 will look to make the entry pass if #5 is open.

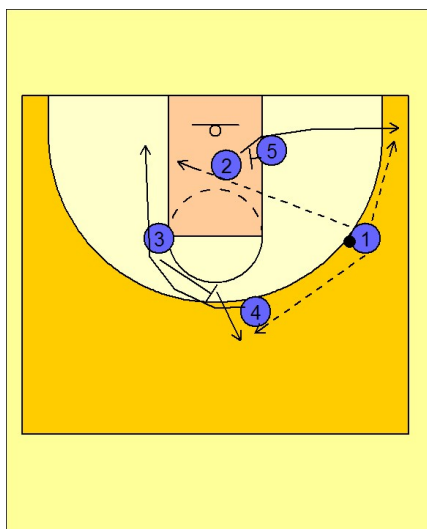


2

### Memphis Set Play vs. Man Defense

If #5 is not open, #2 (after screening for #5), turns around and curls out to the right corner area off of a screen from #5. As this is happening, #3 back screens for #4 on top. #1 can look to hit #2 in the right corner for the open jump shot or hit #4 breaking to the basket off the back screen from #3.

If #2 or #4 is not open, #1 will hit #3 on top who has broken out after back screening.



3

### Memphis Set Play vs. Man Defense

#3 will then take the ball over to the left wing looking to post up #4 on the left low block. #5 flashes to the high post looking to receive the pass from #3 and make the high / low entry pass to #4 inside.

