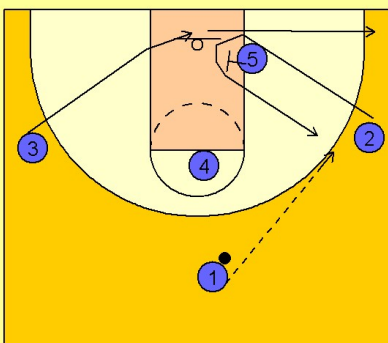


Memphis

Set play vs. man defense (9)

1

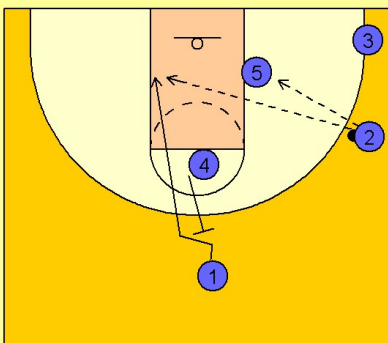
Memphis Set Play vs. Man Defense



#2 starts the play by cutting down into the lane and around behind the post player #5. #5 sets a screen as #2 pops back out to the right wing. This action in the post enables #5 to get open for a catch, as #5's defender has to "hedge" slightly to help on the screen, thus allowing #5 to get open briefly for good post position.

2

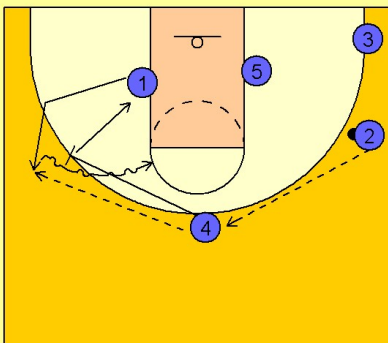
Memphis Set Play vs. Man Defense



#2 then either feeds the low block or looks for #1 cutting to the basket off the back screen from #4.

3

Memphis Set Play vs. Man Defense



If #1 or #5 do not receive the ball, #4 steps out and receives the pass from #2. #4 passes the ball to #1 on the right wing and executes a screen and roll.