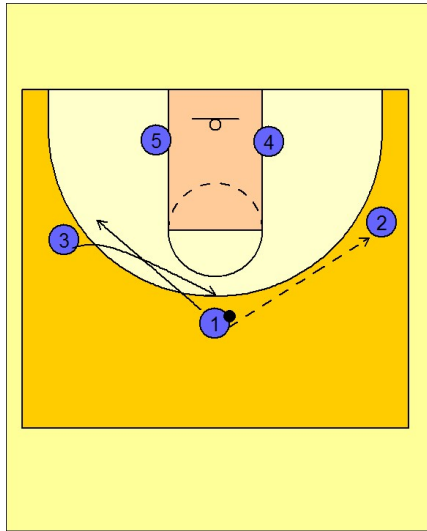


Memphis

Set play vs. zone defense (1)

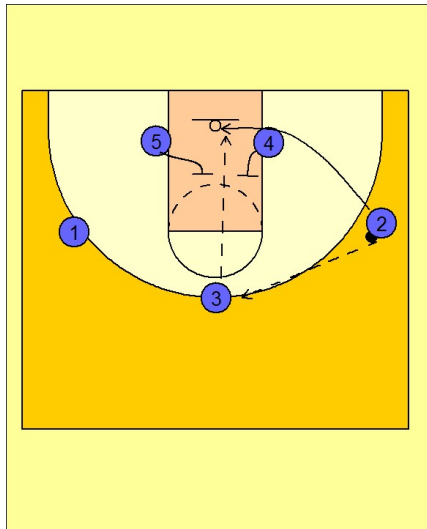
1



Memphis Set Play vs. Zone Defense

#1 passes to #2 on the right wing and exchanges spots with #3.

2



Memphis Set Play vs. Zone Defense

#2 passes to #3 on top and then begins to cut down to the low block.

#4 and #5 back screen the low defenders while #2 sneaks behind the defense for the lob pass from #3.