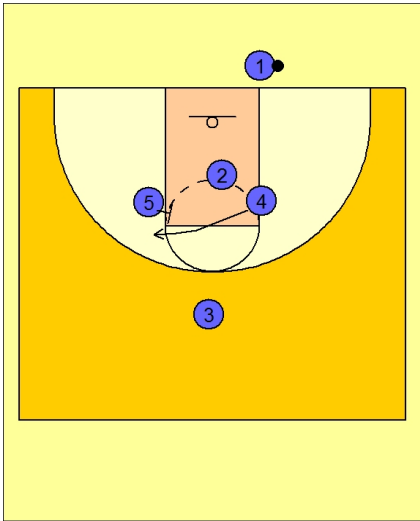


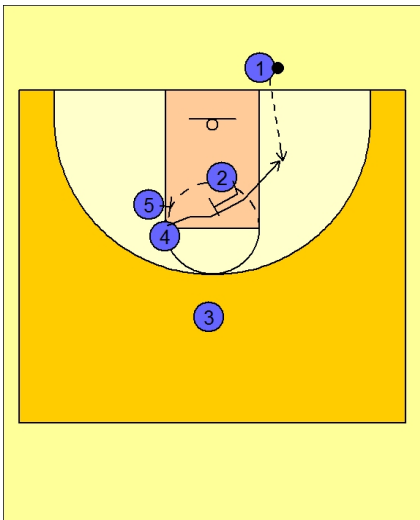


**Ob under vs. man (3)**



**Michigan OB Under vs. Man**

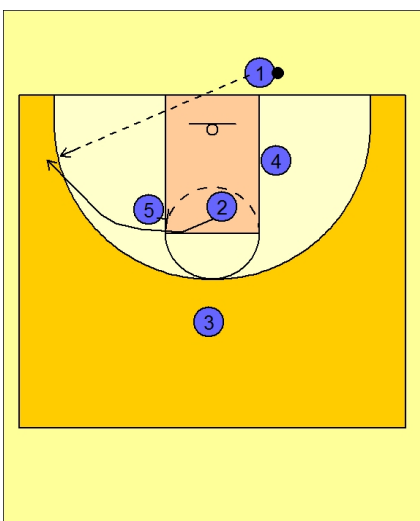
Play starts with #4 cutting to the left side of the floor off of a screen from #5.



**Michigan OB Under vs. Man**

#4 fakes using the screen and then cuts back off of a back screen from #2.

#4 cuts to the basket looking for the entry pass from #1.



**Michigan OB Under vs. Man**

If #4 does not receive the ball, #2 is cutting off the screen from #5 as soon as #4 cut off of his initial screen.