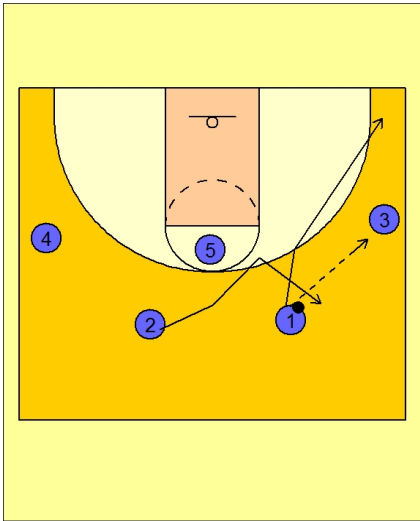




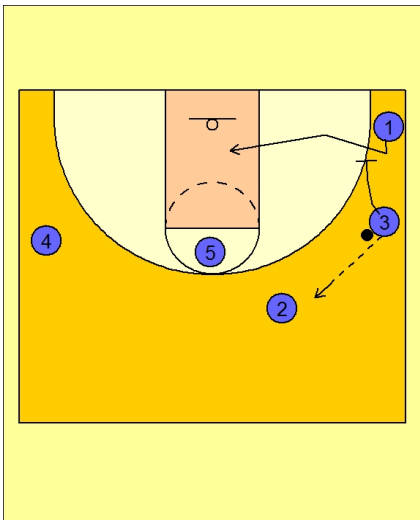
Set play vs. man (3)



Michigan Set Play vs. Man Defense

#1 passes to #3 on the right wing and cuts to the ball side corner.

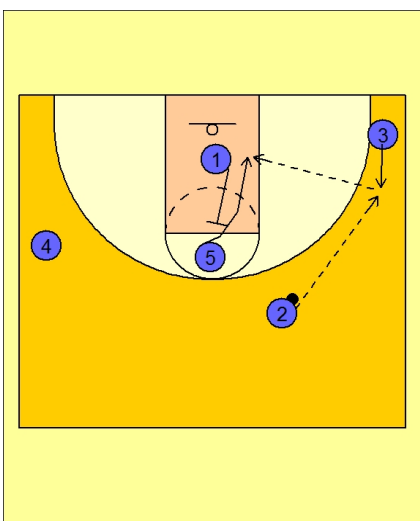
#2 makes a cut toward the right FT line elbow area and then breaks back out on top.



Michigan Set Play vs. Man Defense

#3 passes to #2 on top and screens down for #1 in the right corner.

#1 fakes up to use the screen and then cuts in the lane.



Michigan Set Play vs. Man Defense

#3 cuts back toward the ball to receive the pass from #2.

#1 back screens for #5 and looks to receive the entry pass from #3.