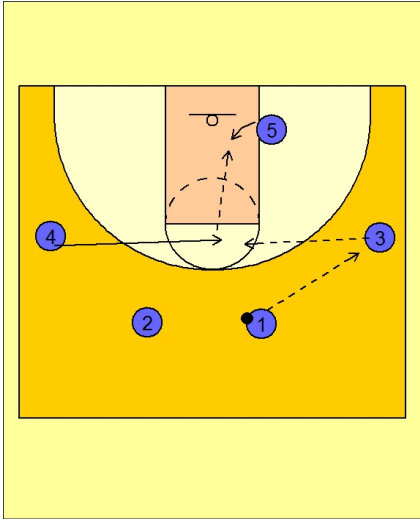




Zone offense (1)



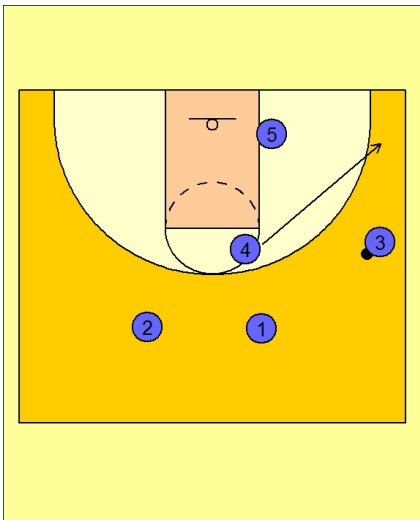
Michigan Zone Offense

Michigan will usually start with a 4-out 1-in alignment and at times will use a 5-out alignment.

They want to always overload one side of the floor and have someone in the corner, so they will look to pass and cut their if it is not already filled.

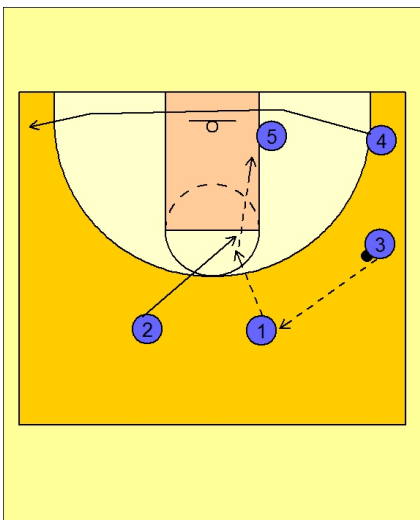
They also like to flash people into the high post, either from the opposite wing or the top guard spot.

Here we see the entry pass to the wing with #4 cutting into the high post, looking to catch and make the high / low entry pass to #5.



Michigan Zone Offense

They will fill the corner in either of two ways. #4 will step out their if he does not receive the pass from #3, or #1 would cut to the corner on the initial entry pass to #3 on the wing.



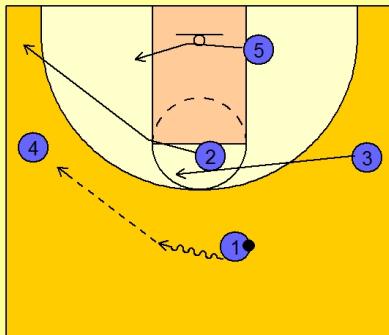
Michigan Zone Offense

Once #4 leaves the high post, #2 has the option to cut into the high post and look for the pass from the wing and again the high / low entry pass to #5.

On ball reversal from the wing, the corner man has the option to run the baseline to the opposite side of the floor.



Michigan Zone Offense

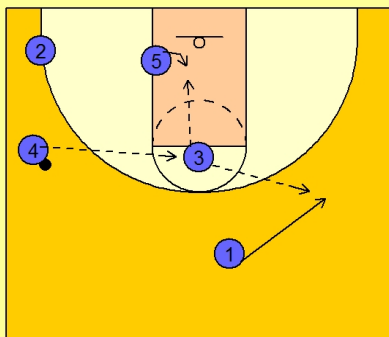


#1 now takes the ball over on the dribble while #2 cuts out of the high post to the corner.

#1 looks to hit #4 on the wing while the back side wing, #3, cuts into the high post.

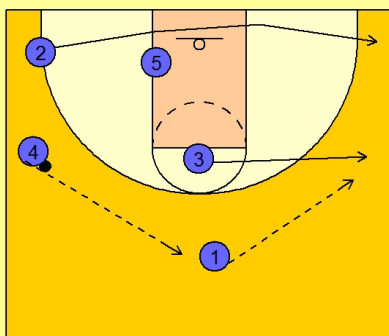
#1 could also pass to #4 and cut into the high post himself if he wanted, and then #3 would cut up on top for floor balance.

Michigan Zone Offense



If #3 receives the ball, he will look inside and then opposite to #1.

Michigan Zone Offense



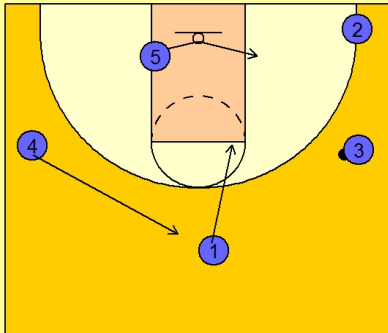
#3 steps out to the wing with #2 having the option of running the baseline.



Michigan Zone Offense

#1 may cut into the high post on the pass to the wing with #4 filling out on top.

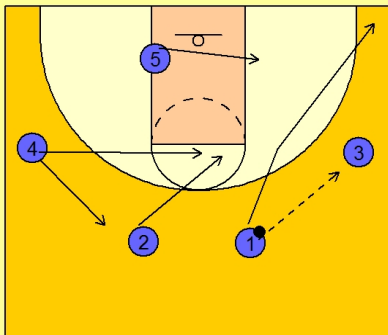
#5 follows the ball from block to block.



Michigan Zone Offense

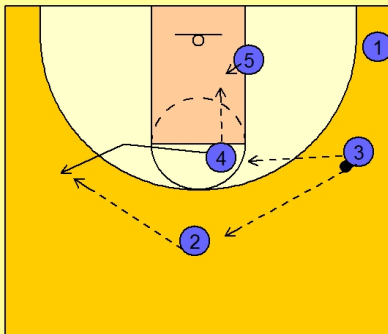
Again, whenever the corner area is open, they will look to pass and cut to the corner.

#2 or #4 has the option to flash into the high post.



Michigan Zone Offense

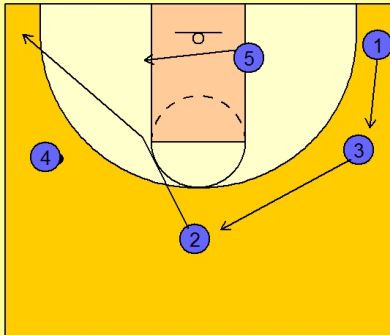
On ball reversal, the player who cut into the high post will exit and get out to the wing area.





Michigan Zone Offense

#1 has the "option" to run the baseline. If he chooses not to, on ball reversal #2 will see that the corner is open and will pass and cut their to complete the overload on the left side of the floor.



Michigan Zone Offense

#3 or #1 now has the option to flash into the high post area.

