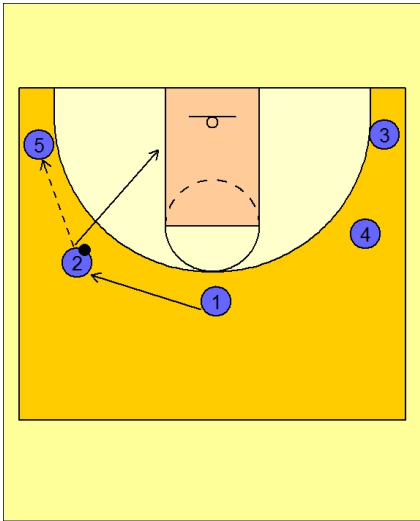




### Zone set play (1)

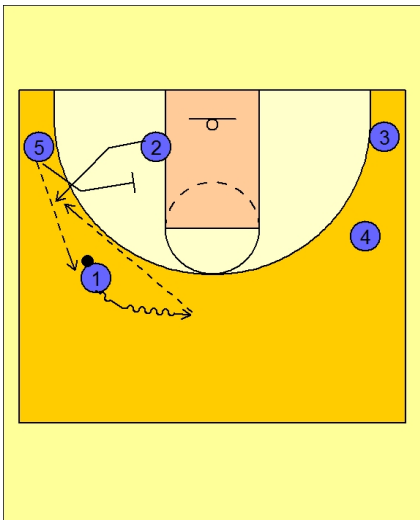


#### Michigan Zone Set Play

From time to time Michigan goes to a 5-out alignment. They will look to pass and cut into the low post and then out to the other side of the floor.

They will also look to get a quick hitting three point shot from this cutting action.

Here we see #2 pass to #5 in the corner and then cut to the ball side low block.



#### Michigan Zone Set Play

#5 passes to #1 on top.

#1 drives the ball to the center of the floor while #5 screens in on the wing defender while #2 cuts out for the open shot in the corner / wing area.