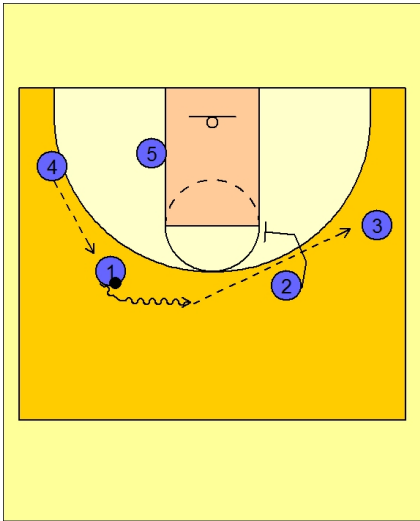




Zone set play (2)

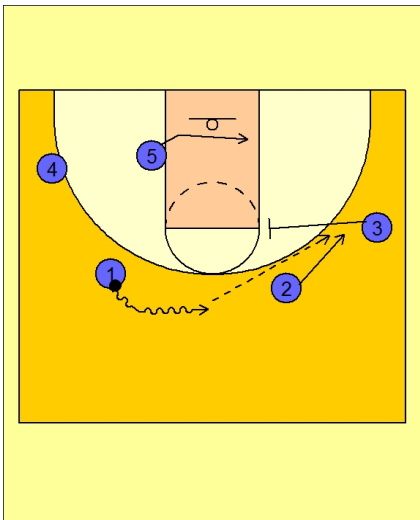


Michigan Zone Set Play

On ball reversal they will look to screen in for wing open jump shots.

Here we see option #1 with the top guard screening down for the wing player #3.

#1 drives the ball to the center and skips the ball over the top of the screen to the open jump shooter on the wing, #3.



Michigan Zone Set Play

Another screening option is for #3 to screen in and #2 would then cut behind the screen to the wing.