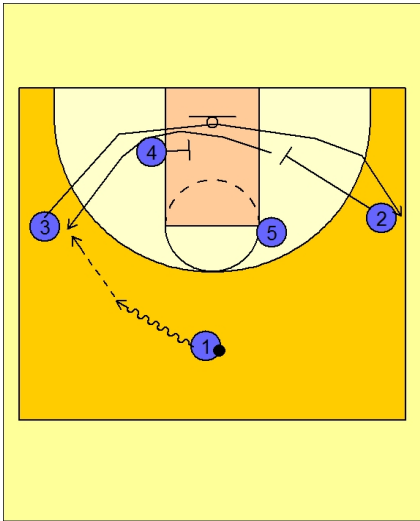




### Early offense (5)



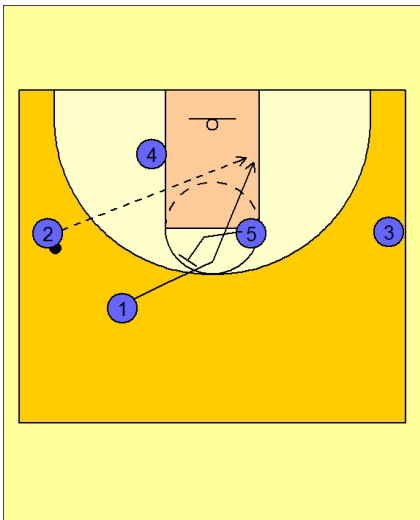
#### Missouri Early Offense

#2 and #3 interchange while #1 takes the ball to the left side of the floor.

#2 stops on the right block to screen for #3.

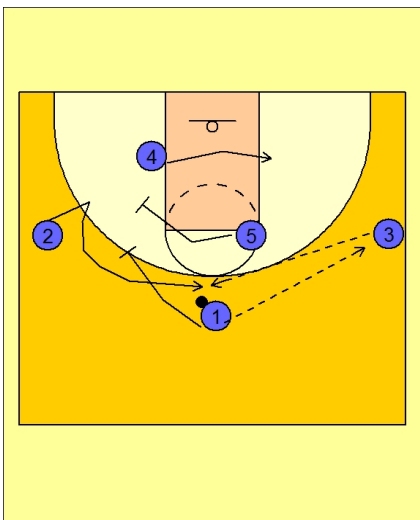
#4 screens for #2.

#1 looks to pass to #2 on the left wing.



#### Missouri Early Offense

#5 back screens for #1. #1 cuts to the rim and looks for the lob pass from #2.



#### Missouri Early Offense

#1 also has the option to pass to #3 on the right wing. If that happens, #4 cuts across and posts up while #5 and #1 set a double screen for #2.