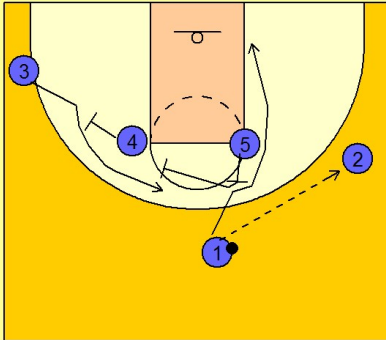


# Missouri

## Early offense (1)

1

### Missouri Early Offense

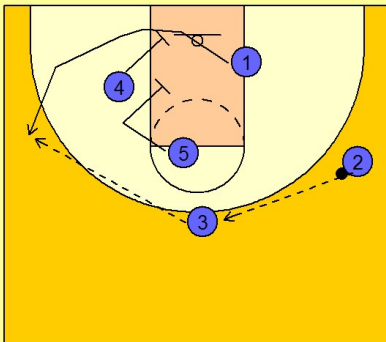


#1 hits #2 on the right wing and cuts to the low block off the back screen from #5.

After #5 back screens for #1, #5 and #4 screen away for #3 on the left wing. #3 comes over the top looking for the open jumper at the top of the key.

2

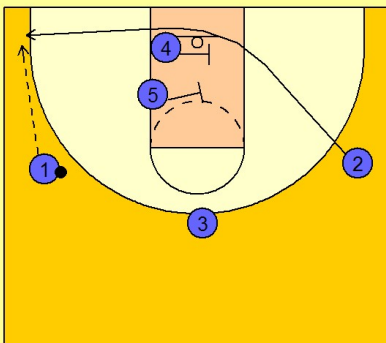
### Missouri Early Offense



#2 hits #3 with the pass on top. #4 and #5 continue double screening for #1, who comes off the double screen and out to the left wing area looking for the open jumper. #3 passes to #1.

3

### Missouri Early Offense



If #1 does not have an open shot, #4 and #5 will double screen again for #2 who has cut across the bottom and out to the ball side corner looking for the open jump shot.