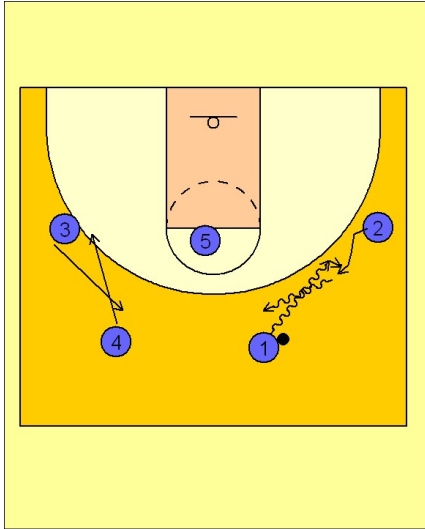


Missouri

Half court offense (1)

1



Missouri Half Court Offense vs. Man

We thought this might just be a set play to begin with, but Missouri ran it repeatedly each time down the floor, upgrading this to their "half court offense".

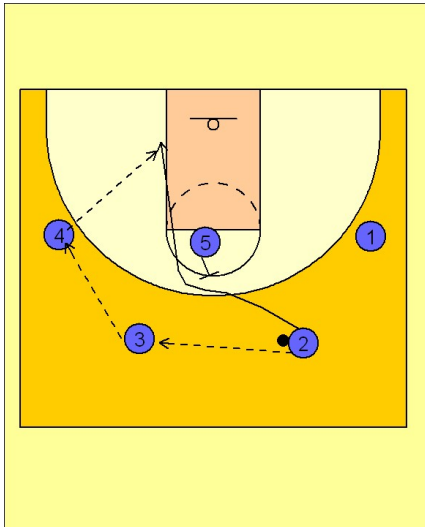
We believe they like to go to this alignment when they are receiving lots of pressure, especially on the wings.

2 - 3 high alignment to begin.

#1 and #2 execute a dribble hand off on the right wing area. #3 and #4 switch positions as this is happening.

This high alignment can give Missouri the opportunity to back cut on the wings when there is pressure.

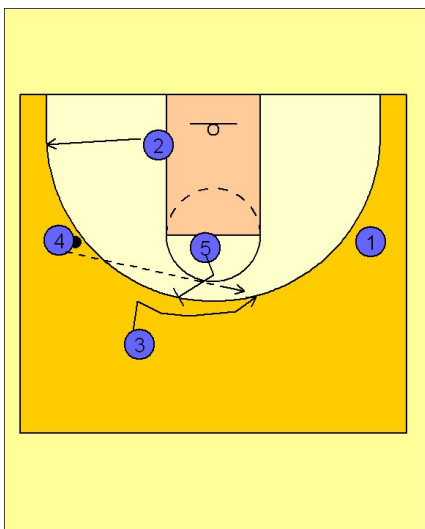
2



Missouri Half Court Offense vs. Man

Once #2 comes off the dribble hand off from #1 he quickly hits #3 on top who throws it to #4 on the left wing. After passing, #2 cuts off the back screen on top from #5. #4 can look to hit #2 if he is open cutting to the basket.

3



Missouri Half Court Offense vs. Man

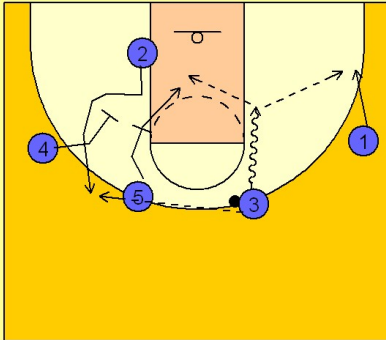
Once #3 passes to #4, he receives a back screen from #5. #3 fades back to the opposite top side area for a pass from #4. #2 cuts out to the corner area now opposite the ball.

Missouri

Half court offense (1)

4

Missouri Half Court Offense vs. Man

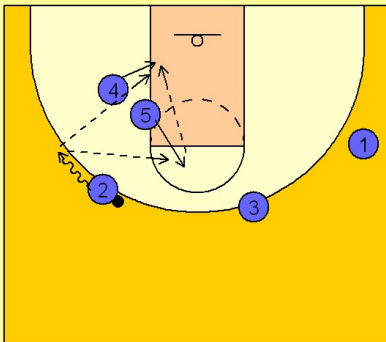


Once #3 has the ball, he can drive the cleared out lane area looking to score. He can also kick it out to #1 on the right wing.

He also has #2 coming off the double screen from #4 and #5.

5

Missouri Half Court Offense vs. Man



If #2 receives the ball off the double screen, #5 flashes into the high post area while #4 fights for post position. #2 takes the ball over a bit on the dribble for a better passing angle into the post. He can either hit #4 directly or hit #5 on top for the high / low entry pass into the post.