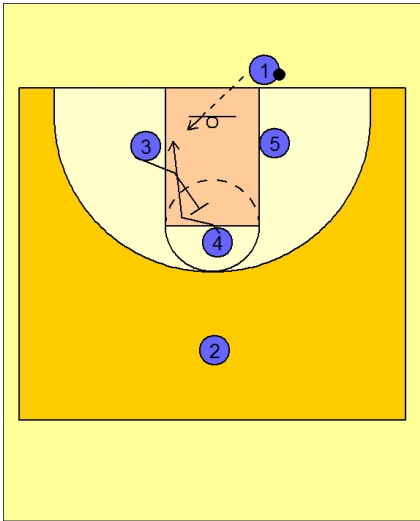


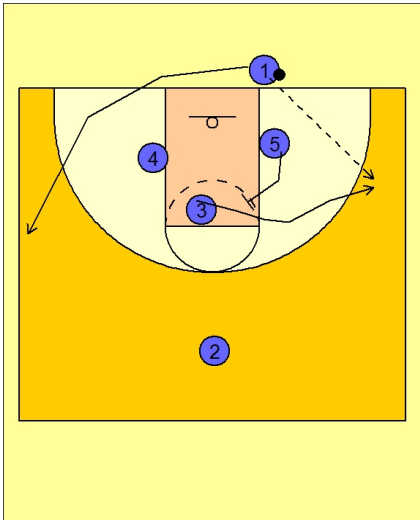


Ob under vs. man (6)



Missouri OB Under vs. Man Defense

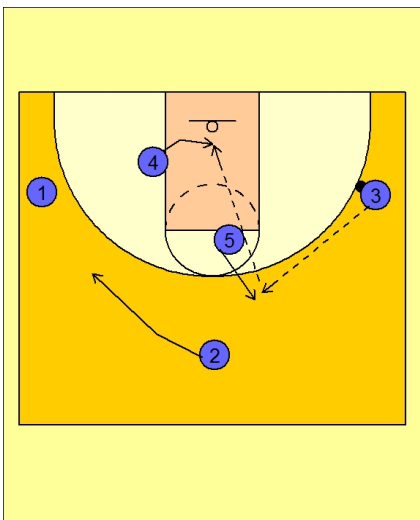
Play starts with #3 back screening for #4. #4 cuts to the rim looking for the entry pass from #1.



Missouri OB Under vs. Man Defense

If #4 does not get the ball, #3 is quickly cutting off the screen from #5 to the ball side wing / corner area.

#1 inbounds the ball to #3 and cuts out to the opposite wing.



Missouri OB Under vs. Man Defense

#5 now steps out to receive the next pass from #3. On the catch, #4 is ducking in the paint looking for the high / low entry pass from #5.