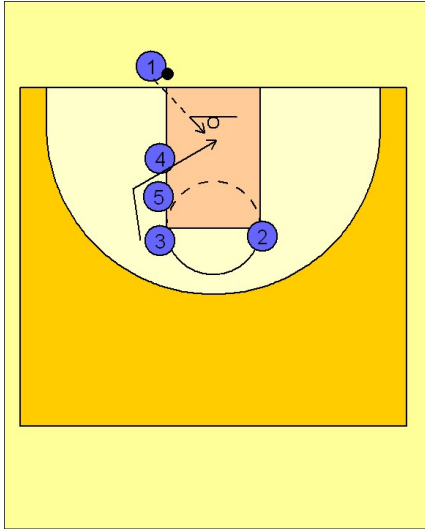


Missouri

Ob under vs. man (1)

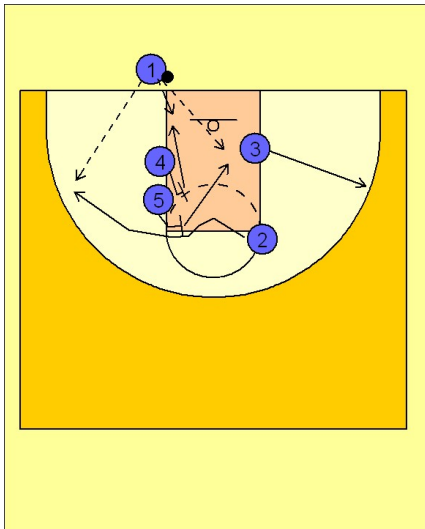
1



Missouri OB Under vs. Man

#3, #4 and #5 stacked on the lane line. #3 cuts between #4 and #5 and across the lane looking for the quick hitting entry pass from #1.

2



Missouri OB Under vs. Man

If #3 is not open, #4 and #5 quickly set a double screen for #2 breaking to the ball side wing / corner area. #3 continues through and out the other side.

#4 and #5 flash into the lane looking for the entry pass after screening for #2.